

TECHNICAL MANUAL
UNIT, DIRECT SUPPORT AND GENERAL SUPPORT MAINTENANCE
REPAIR PARTS AND SPECIAL TOOLS LIST

POWER SUPPLY, HYDRAULIC
MODEL NUMBER 9305
NSN 1730-01-342-2184

EIC YX6

DISTRIBUTION STATEMENT A: Approved for public release; distribution is unlimited.

HEADQUARTERS, DEPARTMENT OF THE ARMY
31 MAY 1996

TECHNICAL MANUAL
NO. 5-1730-245-24P

HEADQUARTERS
DEPARTMENT OF THE ARMY
WASHINGTON D.C., 31 May 1996

TECHNICAL MANUAL

**Unit, Direct Support and General Support Maintenance
Repair Parts and Special Tools List**

**POWER SUPPLY, HYDRAULIC
MODEL NUMBER 9305
NSN 1730-01 -342-2184
EIC YX6**

Current as of 15 September 1995

REPORTING ERRORS AND RECOMMENDING IMPROVEMENTS

You can help improve this manual. If you find any mistakes or if you know of a way to improve the procedures, please let us know. Mail your letter, DA Form 2028 (Recommended Changes to Publications and Blank Forms), or DA Form 2028-2 located in the back of this manual directly to: Commander, US Army Aviation and Troop Command, ATTN: AMSAT-I-MP, 4300 Goodfellow Blvd., St. Louis, MO 63120-1798. You may also submit your recommended changes by E-mail directly to <daf2028@st-louis-emh7.army.mil>. A reply will be furnished directly to you.

DISTRIBUTION STATEMENT A: Approved for public release; distribution is unlimited.

TABLE OF CONTENTS

	PAGE	ILLUS/ FIGURE
Section I. INTRODUCTION	1	
Section II. REPAIR PARTS LIST .		
Group 01 Instruments and Controls	1-1	1
Group 02 Cabinet Structure	2-1	2
Group 03 Hydraulic System	3-1	3
Group 04 Drive System	4-1	4
Section III. SPECIAL TOOLS LIST (Not Applicable)		
Section IV. CROSS-REFERENCE INDEXES		
National Stock Number Index	I-1	
Part Number Index	I-2	
Figure and Item Number Index	I-10	

**UNIT, DIRECT SUPPORT AND GENERAL SUPPORT
MAINTENANCE REPAIR PARTS AND SPECIAL TOOLS LIST**

Section I. INTRODUCTION

1. SCOPE. This R PSTL lists and authorizes spares and repair parts; special tools; special test, measurement, and diagnostic equipment (TMDE); and other special support equipment required for performance of unit, direct support and general support maintenance of the hydraulic power supply. It authorizes the requisitioning, issue, and disposition of spares, repair parts and special tools as indicated by the source, maintenance and recoverability (SMR) codes.

2. GENERAL. In addition to this section, Introduction, this Repair Parts and Special Tools List is divided into the following sections:

a. Section II. Repair Parts List. A list of spares and repair parts authorized by this RPSTL for use in the performance of maintenance. This list also includes parts which must be removed for replacement of the authorized parts. Parts lists are composed of functional groups in ascending alphanumeric sequence, with the parts in each group listed in ascending figure and item number sequence. Bulk materials are listed in item name sequence. Items are shown in the associated illustration(s)/figure(s).

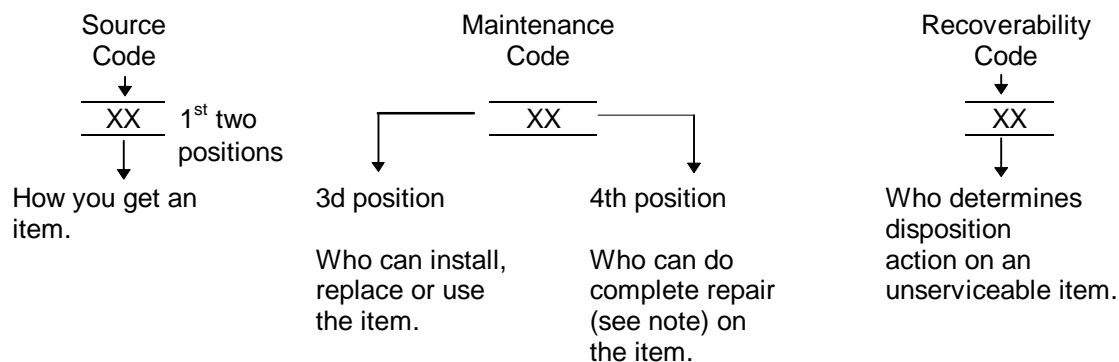
b. Section III. Special Tools List. A list of special tools, special TMDE, and other special support equipment authorized by this RPSTL (as indicated by Basis of Issue (BOI) information in DESCRIPTION AND USABLE ON CODE column) for the performance of maintenance.

c. Section IV. Cross-Reference Index. A list, in National Item Identification Number (NIIN) sequence, of all National stock numbered items appearing in the listing, followed by a list in alphanumeric sequence of all part numbers appearing in the listings. National stock numbers and part numbers are cross referenced to each illustration figure and item number appearance. The figure and item number index lists figure and item numbers in alphanumeric sequence and cross references NSN, CAGEC and part number.

3. EXPLANATION OF COLUMNS (SECTIONS II AND III).

a. ITEM NO. (Column (1)). Indicates the number used to identify items called out in the illustration.

b. SMR Code (Column (2)). The Source, Maintenance, and Recoverability (SMR) code is a 5-position code containing supply/requisitioning information, maintenance category authorization criteria, and disposition instruction, as shown in the following breakout:



* Complete Repair: Maintenance capacity, capability, and authority to perform all corrective maintenance tasks of the "Repair" function in a use/user environment in order to restore serviceability to a failed item.

(1) Source Code. The source code tells you how to get an item needed for maintenance, repair, or overhaul of an end item/equipment. Explanations of source codes follows:

Source Code	Explanation
PA PB PC** PD PE PF PG	<p>Stocked items; use the applicable NSN to request/requisition items with these source codes. They are authorized to the category indicated by the code entered in the 3rd position of the SMR code.</p> <p>**NOTE: Items coded PC are subject to deterioration.</p>
KD KF KB	<p>Items with these codes are not to be requested/requisitioned individually. They are part of a kit which is authorized to the maintenance category indicated in the 3rd position of the SMR code. The complete kit must be requisitioned and applied.</p>
MO (Made at Unit/AVUM Level) MF (Made at DS/AVIM Level) MH (Made at GS Level) ML (Made at Specialized Repair Activity (SRA)) MD (Made at Depot)	<p>Items with these codes are not to be requested/requisitioned individually. They must be made from bulk material which is identified by the part number in the DESCRIPTION and USABLE ON CODE (UOC) column and listed in the Bulk Mate- rial group of the repair parts list in this RPSTL. If the item is authorized to you by the 3rd position code of the SMR code, but the source code indicates it is made at a higher level, order the item from the higher level of maintenance.</p>
AO (Assembled by Unit/AVUM Level) AF (Assembled by DS/AVIM Level) AH (Assembled by GS Category) AL (Assembled by SRA) AD (Assembled by Depot) AD (Assembled by Depot)	<p>Items with these codes are not to be requested/ requisitioned individually. The parts that make up the assembled item must be requisitioned or fabricated and assembled at the level of maintenance indicated by the source code. If the 3rd position code of the SMR code authorizes you to replace the item, but the source code indicates the items are assembled at a higher level, order the item from the higher level of maintenance.</p>
XA	Do not requisition "XA"-coded item. Order its next higher assembly. (Refer to the NOTE below.)
XB	If an "XB" item is not available from salvage, order it using the CAGEC and part number given.
XC	Installation drawing, diagram, instruction sheet, field service drawing, that is identified manufacturer's part number.
XD	Item is not stocked. Order an "XD"-coded item through normal supply channels using the CAGEC and part number given, if no NSN is available.

NOTE

Cannibalization or controlled exchange, when authorized, may be used as a source of supply for items with the above source codes, except for those source coded "XA" or those aircraft support items restricted by requirements of AR 750-1.

(2) Maintenance Code. Maintenance codes tell you the level(s) of maintenance authorized to USE and REPAIR support items. The maintenance codes are entered in the third and fourth positions of the SMR code as follows:

(a) The maintenance code entered in the third position tells you the lowest maintenance level authorized to remove, replace, and use an item. The maintenance code entered in the third position will indicate authorization to the following levels of maintenance.

Maintenance Code	Application/Explanation
C -	Crew or operator maintenance done within unit/AVUM maintenance.
O -	Unit level/AVUM maintenance can remove, replace, and use the item.
F -	Direct support/AVIM maintenance can remove, replace, and use the item.
H -	General support maintenance can remove, replace, and use the item.
L -	Specialized repair activity can remove, replace, and use the item.
D -	Depot can remove, replace, and use the item.

(b) The maintenance code entered in the fourth position tells whether or not the item is to be repaired and identifies the lowest maintenance level with the capability to do complete repair (i.e., perform all authorized repair functions.)

NOTE

Some limited repair may be done on an item at a lower level of maintenance, if authorized by the Maintenance Allocation Chart and SMR codes.

Maintenance Code	Application/Explanation
O -	Unit/AVUM is the lowest level that can do complete repair of the item.
F -	Direct support/AVIM is the lowest level that can do complete repair of the item.
H -	General Support is the lowest level that can do complete repair of the item.
L -	Specialized repair activity is the lowest level that can do complete repair of the item.
D -	Depot is the lowest level that can do complete repair of the item.
Z -	Nonreparable. No repair is authorized.
B -	No repair is authorized. No parts or special tools are authorized for the maintenance of a "B" coded item. However, the item may be reconditioned by adjusting, lubricating, etc., at the user level.

(3) Recoverability Code. Recoverability codes are assigned to items to indicate the disposition action on unserviceable items. The recoverability code is entered in the fifth position of the SMR Code as follows:

Recoverability Codes	Application/Explanation
Z -	Nonreparable item. When unserviceable, condemn and dispose of the item at the level of maintenance shown in 3d position of SMR Code.
O -	Reparable item. When not economically repairable, condemn and dispose of the item at unit or AVUM level.
F -	Reparable item. When uneconomically repairable, condemn and dispose of the item at the direct support or AVIM level.
H -	Reparable item. When uneconomically repairable, condemn and dispose of the item at the general support level.
D -	Reparable item. When beyond lower level repair capability, return to depot. Condemnation and disposal of item not authorized below depot level.

Recoverability Codes

Application/Explanation

- L - Repairable item. Condemnation and disposal not authorized below specialized repair activity (SRA).
- A - Item requires special handling or condemnation procedures because of specific reasons (e.g., precious metal content, high dollar value, critical material, or hazardous material). Refer to appropriate manuals/directives for specific instructions.

c. CAGEC (Column (3)). The Commercial and Government Entity Code (CAGEC) is a 5-digit numeric code which is used to identify the manufacturer, distributor, or Government agency/activity that supplies the item.

d. PART NUMBER (Column (4)). Indicates the primary number used by the manufacturer, (individual, company, firm, corporation, or Government activity), which controls the design and characteristics of the item by means of its engineering drawings, specifications, standards, and inspection requirements to identify an item or range of items.

NOTE

When you use an NSN to requisition an item, the item you receive may have a different part number from the number listed.

e. DESCRIPTION AND USABLE ON CODE (UOC) (Column (5)). This column includes the following information:

(1) The Federal item name and, when required, a minimum description to identify the item.

(2) Part numbers of bulk materials are referenced in this column in the line entry to be manufactured/fabricated.

(3) The statement "END OF FIGURE" appears just below the last item description in Column (5) for a given figure in both Section II and Section III.

f. QTY (Column (6)). The QTY (quantity per figure) column indicates the quantity of the item used in the breakout shown on the illustration/figure, which is prepared for a functional group, subfunctional group, or an assembly. A "V" appearing in this column instead of a quantity indicates that the quantity is variable and may vary from application to application.

4. EXPLANATION OF INDEX FORMAT AND COLUMNS (SECTION IV).

a. NATIONAL STOCK NUMBER (NSN) INDEX.

(1) STOCK NUMBER Column. This column lists the NSN in national item identification number (NIIN) sequence. The NIIN consists of the last nine digits of the NSN, i.e.

NSN
<u>5305-01-574-1467</u>
NIIN

When using this column to locate an item, ignore the first four digits of the NSN. Use the complete NSN (13 digits) when requisitioning items by stock number.

(2) FIG. Column. This column lists the number of the figure where the item is identified/located. The figures are in numerical order in Section II and Section III.

(3) ITEM Column. The item number identifies the item associated with the figure listed in the adjacent FIG. column. This item is also identified by the NSN listed on the same line.

b. PART NUMBER INDEX. Part numbers in this index are listed by part number in ascending alphanumeric sequence (i.e., vertical arrangement of letter and number combination which places the first letter or digit of each group in order A through Z, followed by the numbers 0 through 9, and each following letter or digit in like order).

(1) CAGEC Column. The Commercial and Government Entity Code (CAGEC) is a 5-digit numeric code used to identify the manufacturer, distributor, or Government agency/activity that supplies the item.

(2) PART NUMBER Column. Indicates the primary number used by the manufacturer (individual, firm, corporation, or Government activity), which controls the design and characteristics of the item by means of its engineering drawings, specifications, standards, and inspection requirements to identify an item or range of items.

(3) STOCK NUMBER Column. This column lists the NSN for the associated part number and manufacturer identified in the PART NUMBER and CAGEC columns to the left.

(4) FIG. Column. This column lists the number of the figure where the item is identified/located in Section II and Section III.

(5) ITEM Column. The item number is that number assigned to the item as it appears in the figure referenced in adjacent figure number column.

c. FIGURE AND ITEM NUMBER INDEX.

(1) FIG. Column. This column lists the number of the figure where the item is identified/located in Section II and Section III.

(2) ITEM Column. The item number is that number assigned to the item as it appears in the figure referenced in the adjacent figure number column.

(3) STOCK NUMBER Column. This column lists the NSN for the item.

(4) CAGEC Column. The Commercial and Government Entity Code (CAGEC) is a 5-digit numeric code used to identify the manufacturer, distributor, or Government agency/activity that supplies the item.

(5) PART NUMBER Column. Indicates the primary number used by the manufacturer (individual, firm, corporation, or Government activity), which controls the design and characteristics of the item by means of its engineering drawings, specifications, standards, and inspection requirements to identify an item or range of items.

5. SPECIAL INFORMATION.

a. USABLE ON CODE. The usable on code appears in the lower left corner of the Description Column heading. Usable on codes are shown as "UOC" in the Description Column (justified left) on the last line of the applicable item description/nomenclature. Uncoded items are applicable to all models. Identification of the usable on codes used in this RPSTL are:

Code	Used On
A	Model
B	Model
C	Model
D	Model

b. FABRICATION INSTRUCTIONS. Bulk materials required to manufacture items are listed in the Bulk Material Functional Group of this RPSTL. Part numbers for bulk materials are also referenced in the description column of the line entry for the item to be manufactured/fabricated. Detailed fabrication instructions for items source coded to be manufactured or fabricated are found in TM 5-1730-245-14.

c. INDEX NUMBERS. Items which have the word BULK in the figure column will have an index number shown in the item number column. This index number is a cross-reference between the National Stock Number/Part Number Index and the bulk material list in Section II.

d. ASSOCIATED PUBLICATIONS. The publications listed below pertain to the hydraulic power supply and its components.

<u>Publication</u>	<u>Short Title</u>
TM 5-1730-245-14	Operator, Unit, Direct Support and General Support Maintenance Manual.

6. HOW TO LOCATE REPAIR PARTS.

a. When National Stock Numbers or Part Numbers are NOT Known.

(1) First. Using the table of contents, determine the assembly or subassembly group to which the item belongs. This is necessary since figures are prepared for assembly groups and subassembly groups, and listings are divided into the same groups.

(2) Second. Find the figure covering the assembly group or subassembly group to which the item belongs.

(3) Third. Identify the item on the figure and use the Figure and Item Number Index to find the NSN.

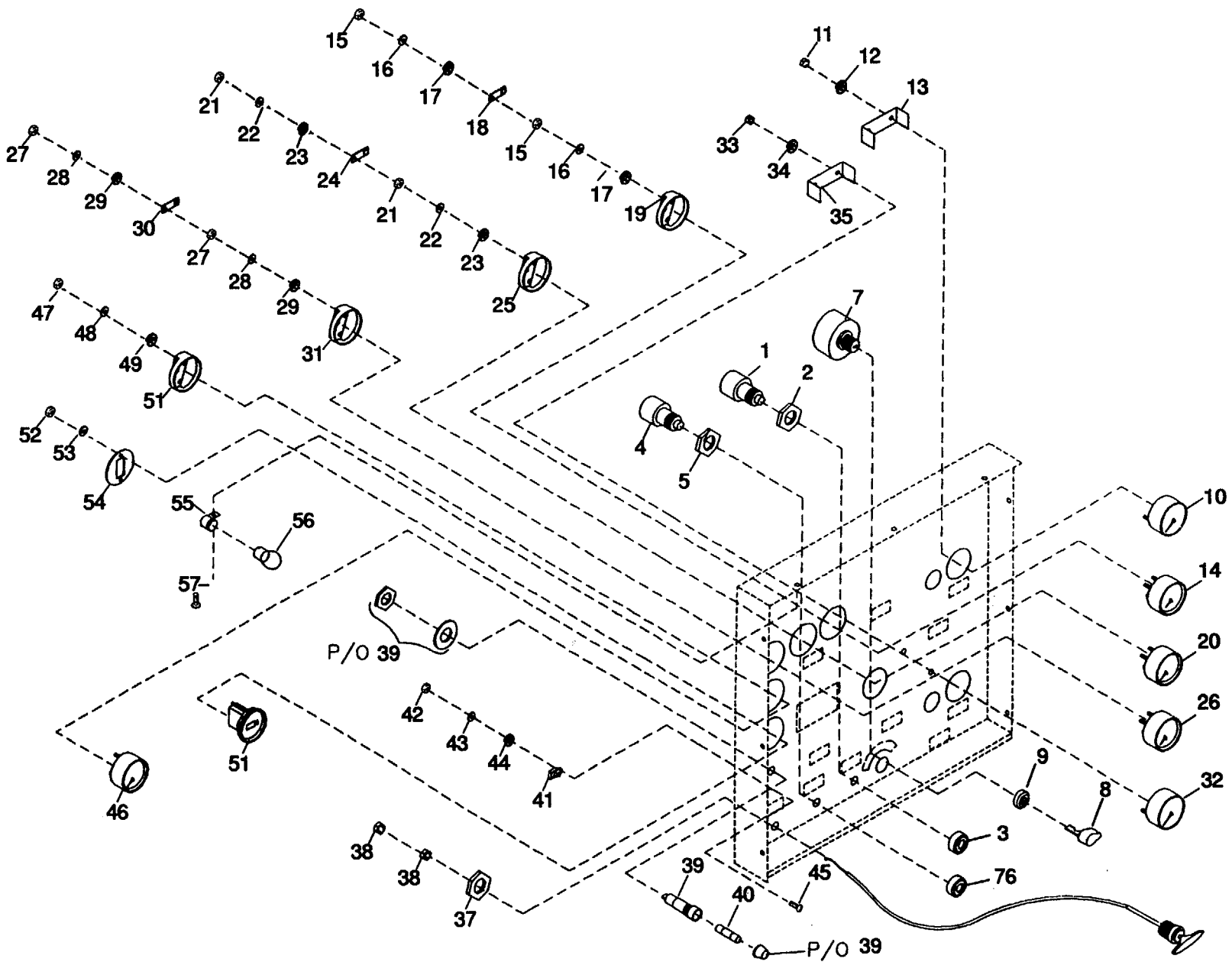
b. When National Stock Number or Part Number is Known.

(1) First. Using the of National Stock Number and Part Number Indexes find the pertinent National Stock Number or Part Number. The NSN index is in National Item Identification Number (NIIN) sequence (see paragraph 4.a.). The part numbers in the Part Number index are listed in ascending alphanumeric sequence (see paragraph 4.b.). Both indexes cross-reference you to the illustration/figure and item number of the item you are looking for.

(2) Second. Turn to the figure and item number, verify that the item is the one you are looking for, then locate the item number in the repair parts list for the figure.

7. ABBREVIATIONS. Abbreviations used in this manual are listed in MIL-STD-12.

Figure 1. Instruments and Controls



(1) ITEM NO.	(2) SMR CODE	(3) NSN	(4) CAGEC	(5) PART NUMBER	(6) DESCRIPTION AND USABLE ON CODES(UOC)	(7) QTY
GROUP 01 INSTRUMENTS AND CONTROLS						
FIG. 1 INSTRUMENTS AND CONTROLS						
1	PAFZZ	5930002218992	13445	9095	SWITCH,PUSH.....	1
2	XBFZZ		13445	8307	NUT,PAL	1
3	PAFZZ		13445	8304	NUT,FACE	2
4	PAFZZ		13445	9115	SWITCH,STOP	1
5	PAFZZ		13445	8507	NUT,PAL	1
6	PAFZZ		13445	8304	NUT,FACE	2
7	PAFZZ		13445	95509	SWITCH,IGNITION	1
8	PAFZZ		13445	83355	KEY,IGNITION SWITCH	1
9	XBFZZ		13445	85753	NUT,HEX	1
10	PAFZZ		04198	20W1001TH01B	GAUGE,PRESSURE	2
11	XBFZZ	5310009349757	96906	MS35649-282	NUT,PLAIN,HEXAGON	4
12	PAFZZ	5310000453296	96906	MS35338-43	WASHER,LOCK	6
13	PAFZZ		04198	101101A167-07	CLAMP,GAUGE	2
14	PAFZZ		09527	GPO634	GAUGE,ENGINE TEMP	1
15	PAFZZ	5310009349762	96906	MS35649-286	NUT,PLAIN,HEXAGON	25
16	PAFZZ	5310002618278	96906	MS35338-100	WASHER,LOCK	25
17	XBFZZ		96906	MS15759-946	WASHER,FLAT	25
18	PAFZZ		09527	GY0094F	RESISTOR ASSEMBLY	1
19	XBFZZ		09527	BL0037	RETAINER,GAUGE	4
20	PAFZZ		09527	GPO803	GAUGE,OIL PRESSURE	1
21	XBFZZ	5310009349762	96906	MS35649-286	NUT,PLAIN,HEXAGON	25
22	PAFZZ	5310002618278	96906	MS35338-100	WASHER,LOCK	25
23	XBFZZ		96906	MS15759-946	WASHER,FLAT	25
24	PAFZZ		09527	GY0099F	RESISTOR ASSEMBLY	2
25	XBFZZ		09527	BL0037	RETAINER,GAUGE	4
26	PAFZZ		09527	GP0709	GAUGE,FUEL LEVEL	1
27	PAFZZ	5310009349762	96906	MS35649-286	NUT,PLAIN,HEXAGON	25
28	PAFZZ	5310002618278	96906	MS35338-100	WASHER,LOCK	25
29	XBFZZ		96906	MS15759-946	WASHER,FLAT	25
30	PAFZZ		09527	GY0099F	RESISTOR ASSEMBLY	2
31	XBFZZ		09527	BL0037	RETAINER,GAUGE	4
32	PAFZZ		04198	20W1001TH01B	GAUGE,PRESSURE	2
33	XBFZZ	5310009349757	96906	MS35649-282	NUT,PLAIN,HEXAGON	4
34	PAFZZ	5310000453296	96906	MS35338-43	WASHER,LOCK	6
35	PAFZZ		04198	101A167-07	CLAMP,GAUGE	2
36	PAFZZ		29516	9305-210	CABLE ASSY,THROTTLE	1
37	PAFZZ	5310008392066	96906	MS35691-45	NUT,PLAIN,HEXAGON	2
38	PAFZZ		29516	9305-220	NUT,HEX,CONDUIT	2
39	XBFZZ		75915	342048	FUSEHOLDER ASSEMBLY	1
40	PAFZZ	5920000117142	81349	F02A125V100A	FUSE,CARTRIDGE	1
41	PAFZZ		62389	46202LR	SWITCH,LIGHT	1
42	XBFZZ	5310009349739	96906	MS35649-242	NUT,PLAIN,HEXAGON	2
43	PAFZZ	5310005432410	96906	MS35338-40	WASHER,LOCK	2
44	XBFZZ		96906	MS51412-19	WASHER,FLAT	2
45	XBFZZ	5305008892999	96906	MS35206-217	SCREW,MACHINE	2
46	PAFZZ		09527	AP0532	AMMETER	1
47	XBFZZ	5310009349762	96906	MS35649-286	NUT,PLAIN,HEXAGON	25
48	PAFZZ	5310002618278	96906	MS35338-100	WASHER,LOCK	25

SECTION II

TM-5-1730-245-24P

(1) ITEM NO.	(2) SMR CODE	(3) NSN	(4) CAGEC	(5) PART NUMBER	(6) DESCRIPTION AND USABLE ON CODES(UOC)	(7) QTY
49	XBFZZ		96906	MS15759-946	WASHER,FLAT	25
50	XBFZZ		09527	BL0037	RETAINER,GAUGE	4
51	PAFZZ		09527	MH0042	HOURMETER.....	1
52	XBFZZ	5310009349751	96906	MS35650-302	NUT,PLAIN,HEXAGON.....	2
53	PAFZZ	5310000453296	96906	MS35338-43	WASHER,LOCK	4
54	XBFZZ		75915	HW0126	RETAINER,GAUGE	1
55	PAFZZ		13445	2609SC	SOCKET,LAMP	1
56	PAFZZ		OPCZO	1251	LAMP.....	1
57	XBFZZ		96906	MS51850-44	SCREW	1

END OF FIGURE

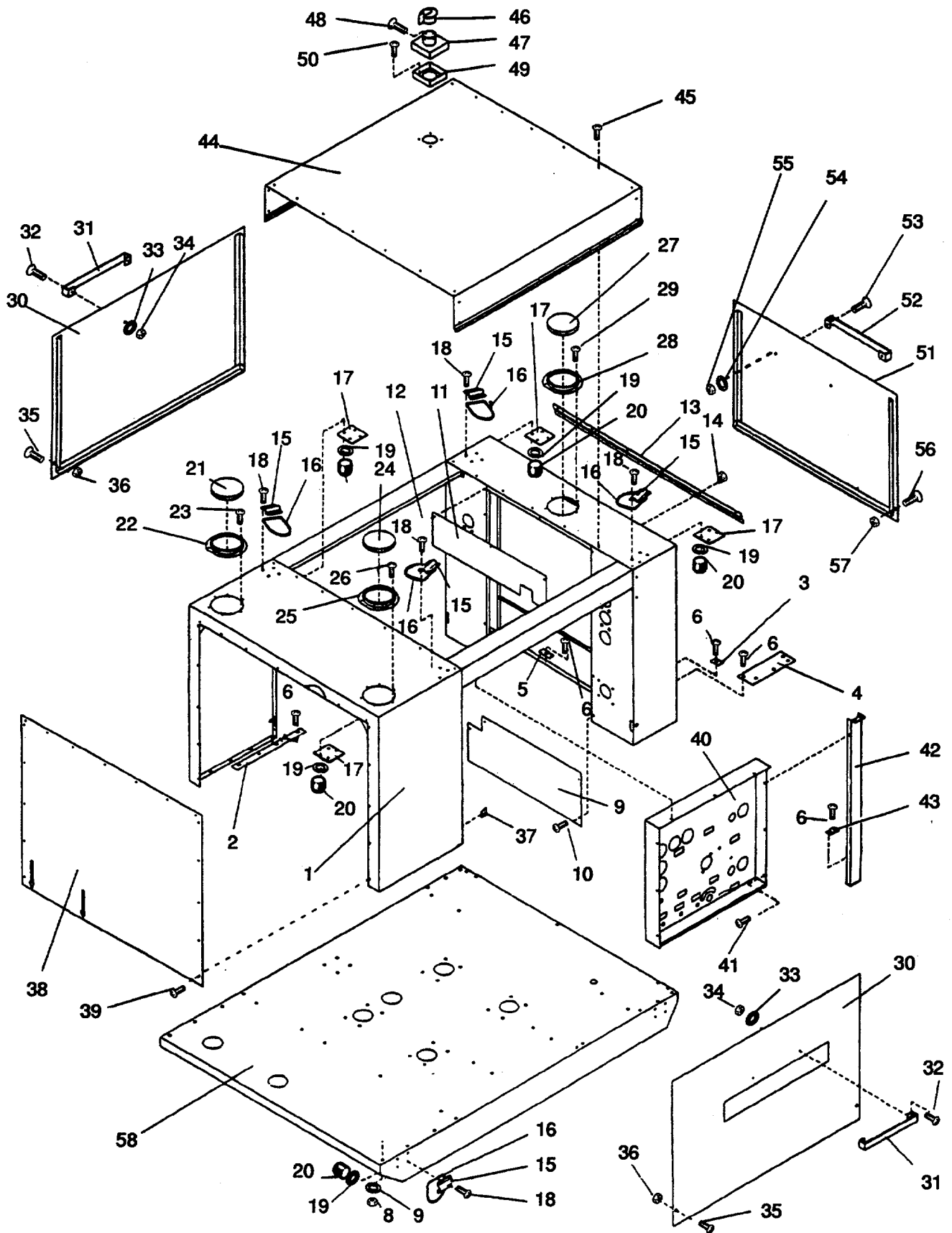


Figure 2. Cabinet assembly.

SECTION II

TM-5-1730-245-24P

(1) ITEM NO.	(2) SMR CODE	(3) NSN	(4) CAGEC	(5) PART NUMBER	(6) DESCRIPTION AND USABLE ON CODES(UOC)	(7) QTY
GROUP 02 CABINET STRUCTURE						
FIG. 2 CABINET ASSEMBLY						
1	XBFZZ		29516	9305-106	HOUSING,MAIN	1
2	XBFZZ		29516	9305-121	PLATE,BACKING.....	2
3	XBFZZ		29516	9305-122	PLATE,BACKING.....	2
4	XBFZZ		29516	9305-123	PLATE,BACKING.....	2
5	XBFZZ		29516	9305-124	PLATE,BACKING.....	3
6	XBFZZ		96906	MS90725-32	BOLT,HEX.....	29
7	PAFZZ	5310004079566	96906	MS35338-45	WASHER,LOCK	25
8	XBFZZ	5310008299981	96906	MS35649-2312	NUT,PLAIN,HEXAGON.....	25
9	XBFZZ		29516	9305-127	SHROUD,LOWER	1
10	XBFZZ		96906	MS51840-44	SCREW	31
11	XBFZZ		29516	9305-128	SHROUD,UPPER	1
12	XBFZZ		96906	MS51840-44	SCREW	31
13	XBFZZ		29516	9305-129	DRIPEDGE	
14	PAFZZ	5320003435435	07707	AD43AH	RIVET,BLIND.....	24
15	PAFZZ		29516	9305-131	RETAINER,D-RING	8
16	PAFZZ		29516	9305-130	D-RING.....	8
17	XBFZZ		29516	9305-126	PLATE,BACKING	4
18	XBFZZ	5305000680502	96906	MS90725-6	SCREW,CAP,HEXAGON H.....	32
19	PAFZZ	5310005825965	96906	MS35338-44	WASHER LOCK	3
20	XBFZZ	5310009971888	96906	MS35649-2252	NUT,PLAIN,HEXAGON.....	32
21	XBFZZ		60012	CD-109	CAP	3
22	XBFZZ		60012	ND-1252	FLANGE HYDRAULIC	1
23	PAFZZ	5320003435435	07707	AD43AH	RIVET BLIND.....	24
24	XBFZZ		60012	CD-109	CAP	3
25	XBFZZ		60012	ND-1252	FLANGE,HYDRAULIC	1
26	PAFZZ	5320003435435	07707	AD43AH	RIVET,BLIND.....	24
27	XBFZZ		60012	CD-109	CAP	3
28	XBFZZ		29516	9305-139	FLANGE,ACCESS	1
29	PAFZZ	5320003435435	07707	AD43AH	RIVET,BLIND.....	24
30	XBFZZ		29516	9305-132	PANEL,SIDE.....	2
31	XBFZZ		29516	9305-133	HANDLE,PANEL.....	3
32	XBFZZ	5305009897434	96906	MS35207-263	SCREW,MACHINE	6
33	PAFZZ	5310000453296	96906	MS35338-43	WASHER,LOCK	6
34	XBFZZ	5310009349751	96906	MS35650-302	NUT,PLAIN,HEXAGON.....	6
35	PAFZZ		94222	85-15-160-16	FASTENER.....	6
36	PAFZZ	5325009983351	94222	85-47-101-15	RECEPTACLE,TURNLOCK.....	6
37	PAFZZ		96906	85-24-201-20	RECEPTACLE	6
38	XBFZZ		29516	9305-134	PANEL,REAR	1
39	XBFZZ		96906	MS51850-44	SCREW	34
40	PAFZZ		29516	9305-105	PANEL,INSTRUMENT	1
41	XBFZZ		96906	MS51840-44	SCREW	31
42	PAFZZ		29516	9305-111	SUPPORT,INSTRUMENT.....	1
43	XBFZZ		29516	9305-125	PLATE,BACKING	1
44	XBFZZ		29516	9305-135	COVER, TOP	1
45	XBFZZ		96906	MS51840-44	SCREW	31
46	XBFZZ		29516	9305-222	CAP,RAIN	1
47	XBFZZ		29516	9305-114	SHIELD,RAIN	1
48	XBFZZ		96906	MS51850-44	SCREW	34

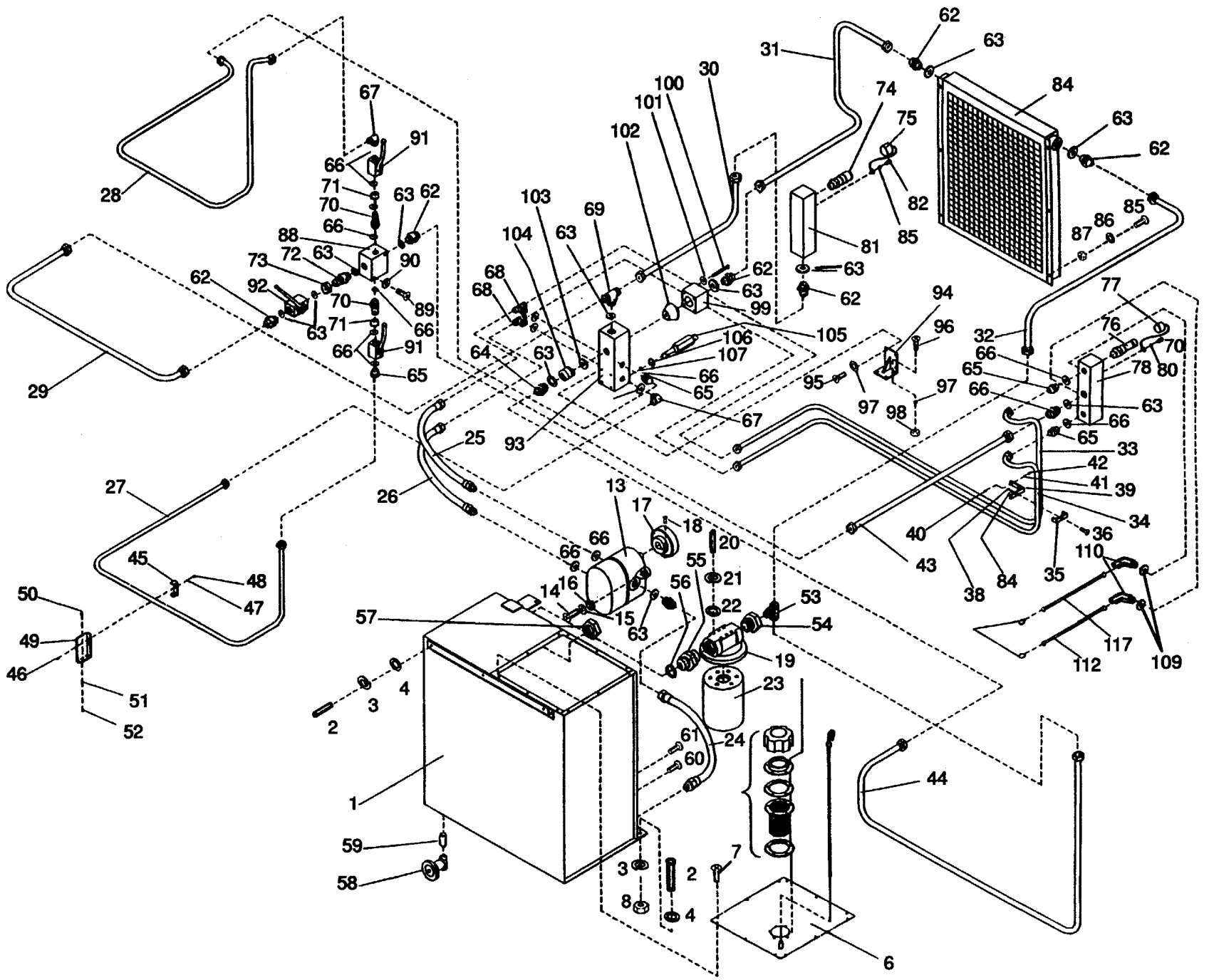
SECTION II

TM-5-1730-245-24P

(1) ITEM NO.	(2) SMR CODE	(3) NSN	(4) CAGEC	(5) PART NUMBER	(6) DESCRIPTION AND USABLE ON CODES(UOC)	(7) QTY
49	XBFZZ		29516	9305-115	FLANGE,RAIN SHIELD	1
50	XBFZZ		96906	MS51850-44	SCREW	34
51	XBFZZ		29516	9305-136	PANEL,FRONT.....	1
52	PAFZZ		29516	9305-133	HANDLE,PANEL.....	3
53	XBFZZ	5305009897434	96906	MS35207-263	SCREW,MACHINE	6
54	PAFZZ	5310000453296	96906	MS35338-43	WASHER,LOCK	6
55	XBFZZ	5310009349751	96906	MS35650-302	NUT,PLAIN,HEXAGON.....	6
56	PAFZZ		94222	85-15-160-16	FASTENER.....	6
57	PAFZZ	5325009983351	94222	85-47-101-15	RECEPTACLE,TURNLOCK.....	6
58	XBFZZ		29516	9305-101	BASE ASSEMBLY	1

END OF FIGURE

Figure 3. Hydraulic Systems.



SECTION II

TM-5-1730-245-24P

(1) ITEM NO.	(2) SMR CODE	(3) NSN	(4) CAGEC	(5) PART NUMBER	(6) DESCRIPTION AND USABLE ON CODES(UOC)	(7) QTY
GROUP 03 HYDRAULIC SYSTEM						
FIG. 3 HYDRAULIC SYSTEM						
1	XBFZZ		29516	9305-113	RESERVOIR, HYDRAULIC.....	1
2	XBFZZ	5305000680502	96906	MS90725-6	SCREW, CAP, HEXAGON H	10
3	PAFZZ	5310005825965	96906	MS35338-44	WASHER, LOCK	34
4	XBFZZ	5310013330060	96906	MS51412-23	WASHER, FLAT	12
5	PAFZZ	5310009971888	96906	MS35649-2252	NUT, PLAIN, HEXAGON.....	7
6	XBFZZ		29516	9305-113-3	COVER, HYDRAULIC OIL	1
7	XBFZZ		96906	MS51850-44	SCREW	20
8	XBFZZ		OJVY1	FBB-080-40	FILLER BREATHER ASS.....	1
9	XBFZZ		96906	MS51850-44	SCREW	20
10	PAFZZ		OJVY1	FB-G	GASKET	2
10	PAFZZ		OJVY1	FB-G	GASKET	2
11	PAFZZ		OJVY1	FB-08OBN	STRAINER.....	1
12	XBFZZ		29516	9305-137	DIPSTICK	1
13	XBFZZ		29516	9305-219	PUMP, HYDRAULIC	1
14	XBFZZ		I9008	M100-4017X30-CL8.	BOLT, HEX HEAD	2
15	PAFZZ		D8286	M10-127A-Z	WASHER, LOCK.....	3
16	XBFZZ		D8286	M10-125A-Z	WASHER, FLAT	2
17	XBFZZ		97947	750-12380	COU P L I N G.....	1
17	XBFZZ		9794i7	750-12380	COUPLING	1
18	XBFZZ		D8286	M10-912X30-CL8.8	BOLT, SOCKET HEAD	1
19	PAFZZ		OJVY1	DH2ULVJN	HOUSING, OIL FILTER	1
20	XBFZZ		96906	MS90725-32	BOLT, HEX.....	29
21	PAFZZ	5310004079566	96906	MS35338-45	WASHER, LOCK	2
22	XBFZZ		96906	MS51575-25	WASHER, FLAT	2
23	PAFZZ		29516	9305-217	FILTER ELEMENT, OIL	1
24	PAFZZ		29516	9305-407	HOSE ASSEMBLY	1
25	PAFZZ		29516	9305-408	HOSE ASSEMBLY.....	1
26	PAFZZ		29516	9305-409	HOSE ASSEMBLY.....	1
27	XBFZZ		29516	9305-410	TUBE ASSEMBLY.....	1
28	XBFZZ		29516	9305-411	TUBE ASSEMBLY	1
29	XBFZZ		29516	9305-412	TUBE ASSEMBLY	1
30	XBFZZ		29516	9305-413	TUBE ASSEMBLY	1
31	XBFZZ		29516	9305-414	TUBE ASSEMBLY	1
32	XBFZZ		29516	9305-415	TUBE ASSEMBLY	1
33	XBFZZ		29516	9305-416	TUBE ASSEMBLY	1
34	XBFZZ		29516	9305-417	TUBE ASSEMBLY	1
35	XBFZZ		29516	9305-119-2	CLAMP	1
36	XBFZZ	5305009953441	96906	MS35207-269	SCREW, MACHINE.....	2
37	PAFZZ	5310000453296	96906	MS35338-43	WASHERLOCK	5
38	XBFZZ	5310009349751	96906	MS35650-302	NUT, PLAIN, HEXAGON.....	5
39	XBFZZ		29516	9305-119-1	BRACKET.....	1
40	XBFZZ	5305009897434	96906	MS35207-263	SCREW MACHINE	3
41	PAFZZ	5310000453296	96906	MS35338-43	WASHERLOCK	5
42	XBFZZ	5310009349751	96906	MS35650-302	NUT, PLAIN, HEXAGON.....	5
43	XBFZZ		29516	9305-418	TUBE ASSEMBLY	1
44	XBFZZ		29516	9305-419	TUBE ASSEMBLY	1
45	XBFZZ		29516	9305-120-2	CLAMP	1
46	XBFZZ	5305009953441	96906	MS35207-269	SCREW, MACHINE	2
47	PAFZZ	5310000453296	96906	MS35338-43	WASHER, LOCK	3
48	XBFZZ	5310009349751	96906	MS35650-302	NUT, PLAIN, HEXAGON.....	5

SECTION II

TM-5-1730-245-24P

(1) ITEM NO.	(2) SMR CODE	(3) NSN	(4) CAGEC	(5) PART NUMBER	(6) DESCRIPTION AND USABLE ON CODES(UOC)	(7) QTY
49	XBFZZ		29516	9305-120-1	BRACKET	1
50	XBFZZ	5305009897434	96906	MS35207-263	SCREW,MACHINE	3
51	PAFZZ	5310000453296	96906	MS35338-43	WASHER,LOCK	5
52	XBFZZ	5310009349751	96906	MS35650-302	NUT,PLAIN,HEXAGON	5
53	XBFZZ		96906	MS51512-B12	TEE	1
54	XBFZZ		93061	AN912-13	BUSHING,STEEL,GALV	1
55	XBFZZ		96906	MS51525-B20	ADAPTER,STRAIGHT	1
56	PCFZZ		96906	MS28778-20	PACKING,PREFORMED	1
57	PAFZZ		96906	MS51860-11	LOCKNUT,BULKHEAD	1
58	XBFZZ		29516	9305-424	VALVE	1
59	XBFZZ		93061	MS51953C-73	NIPPLE,STEEL	1
60	PAFZZ		73752	2525	SWITCH,TEMPERATURE	1
61	PAFZZ		29516	9305-425	VALVE,SAMPLING	1
62	XBFZZ		96906	MS51525-BI2	ADAPTER,STRAIGHT	7
63	PCFZZ	5330005822577	96906	MS9020-12	PACKING,PREFORMED	12
64	XBFZZ		29516	9305-201-3	ADAPTER,SPECIAL	1
65	XBFZZ		96906	MS51525-B10	ADAPTER,STRAIGHT	3
66	PCFZZ	5330002859842	96906	MS28778-10	PACKING,PREFORMED	14
67	XBFZZ		96906	MS51527-B10	ADAPTER,ELBOW	2
68	XBFZZ		96906	MS51529-B10	ADAPTER,TEE	2
69	XBFZZ		96906	MS51529-BI12	ADAPTER,TEE	1
70	XBFZZ		29516	9305-208	ADAPTER,STRAIGHT	2
71	PAFZZ	5310010560177	96906	MS51860-57	NUT,PLAIN,HEXAGON	2
72	XBFZZ		29516	9305-209	ADAPTER,STRAIGHT	1
73	PAFZZ	4730010938464	96906	MS51860-58	LOCKNUT,TUBE FITTING	1
74	XBFZZ		29516	9305-206	QUICK DISCONNECT	3
75	PAFZZ		29516	9305-206-1	DUST CAP PQUICK	3
76	XBFZZ		29516	9305-205	QUICK DISCONNECT	3
77	PAFZZ		29516	9305-205-1	DUST CAP,QUICK	3
78	XBFZZ		29516	9305-204	MANIFOLD BLOCK	1
79	XBFZZ	5305000680500	96906	MS90725-3	SCREW,CAP,HEXAGON H	20
80	PAFZZ	5310005825965	96906	MS35338-44	WASHER,LOCK	34
81	XBFZZ		29516	9305-203	MANIFOLD BLOCK	1
82	XBFZZ	5305000680500	96906	MS90725-3	SCREW,CAP,HEXAGON H	20
83	PAFZZ	5310005825965	96906	MS35338-44	WASHER,LOCK	34
84	XBFZZ		29516	9305-420	OIL COOLER	1
85	XBFZZ	5305000680500	96906	MS90725-3	SCREW,CAP,HEXAGON H	20
86	PAFZZ	5310005825965	96906	MS35338-44	WASHER,LOCK	34
87	XBFZZ	5310013330060	96906	MS51412-23	WASHER,FLAT	12
88	XBFZZ		29516	9305-221	MANIFOLD BLOCK	1
89	PAFZZ	5305000680500	96906	MS90725-3	SCREW,CAP,HEXAGON H	20
90	PAFZZ	5310005825965	96906	MS35338-44	WASHER,LOCK	34
91	PAFZZ		29516	9305-422	VALVE,TWO WAY	2
92	PAFZZ		29516	9305-423	VALVE,TWO WAY	1
93	XBFZZ		29516	9305-201-1	MANIFOLD BLOCK	1
94	XBFZZ		29516	9305-109	BRACKET,MOUNTING	1
95	XBFZZ	5305000680500	96906	MS90725-3	SCREW,CAP,HEXAGON H	20
96	XBFZZ	5305000680502	96906	MS90725-6	SCREW,CAP,HEXAGON H	10
97	PAFZZ	5310005825965	96906	MS35338-44	WASHER,LOCK	34
98	XBFZZ	5310009971888	96906	MS35649-2252	NUT,PLAIN,HEXAGON	7
99	PAFZZ		29516	9305-201-2	MODULE,THERMAL	1
100	XBFZZ		96906	MS90725-16	BOLT,HEX	4

SECTION II

TM-5-1730-245-24P

(1) ITEM NO.	(2) SMR CODE	(3) NSN	(4) CAGEC	(5) PART NUMBER	(6) DESCRIPTION AND USABLE ON CODES(UOC)	(7) QTY
101	PAFZZ	5310005825965	96906	MS35338-44	WASHER,LOCK	34
102	PAFZZ		29516	9305-207	VALVE,THERMAL.....	1
103	PAFZZ		29516	9305-201-4	BUTTO N,SPRING.....	1
104	XBFZZ		29516	9305-201-6	SPRING.....	1
105	PAFZZ		29516	9305-202	RELIEF VALVE ASSY.....	2
106	PCFZZ		96906	MS28778-08	PACKINGTPREFORMED.....	2
107	PCFZZ		96906	MS28775-012	PACKING,PREFORMED.....	2
108	PAFZZ		29516	9305-223	ADAPTER,SPECIAL.....	1
109	PCFZZ		96906	MS28778-04	PREFORMED PACKING.....	1
110	PAFZZ		96906	MS51527-B04	ADAPTER,ELBOW	1
111	PAFZZ		29516	9305-431	TUBE ASSEMBLY	1
112	PAFZZ		29516	9305-432	TUBE ASSEMBLY	1
113	PAFZZ		96906	MS51525-B04	ADAPTER,STRAIGHT	1

END OF FIGURE

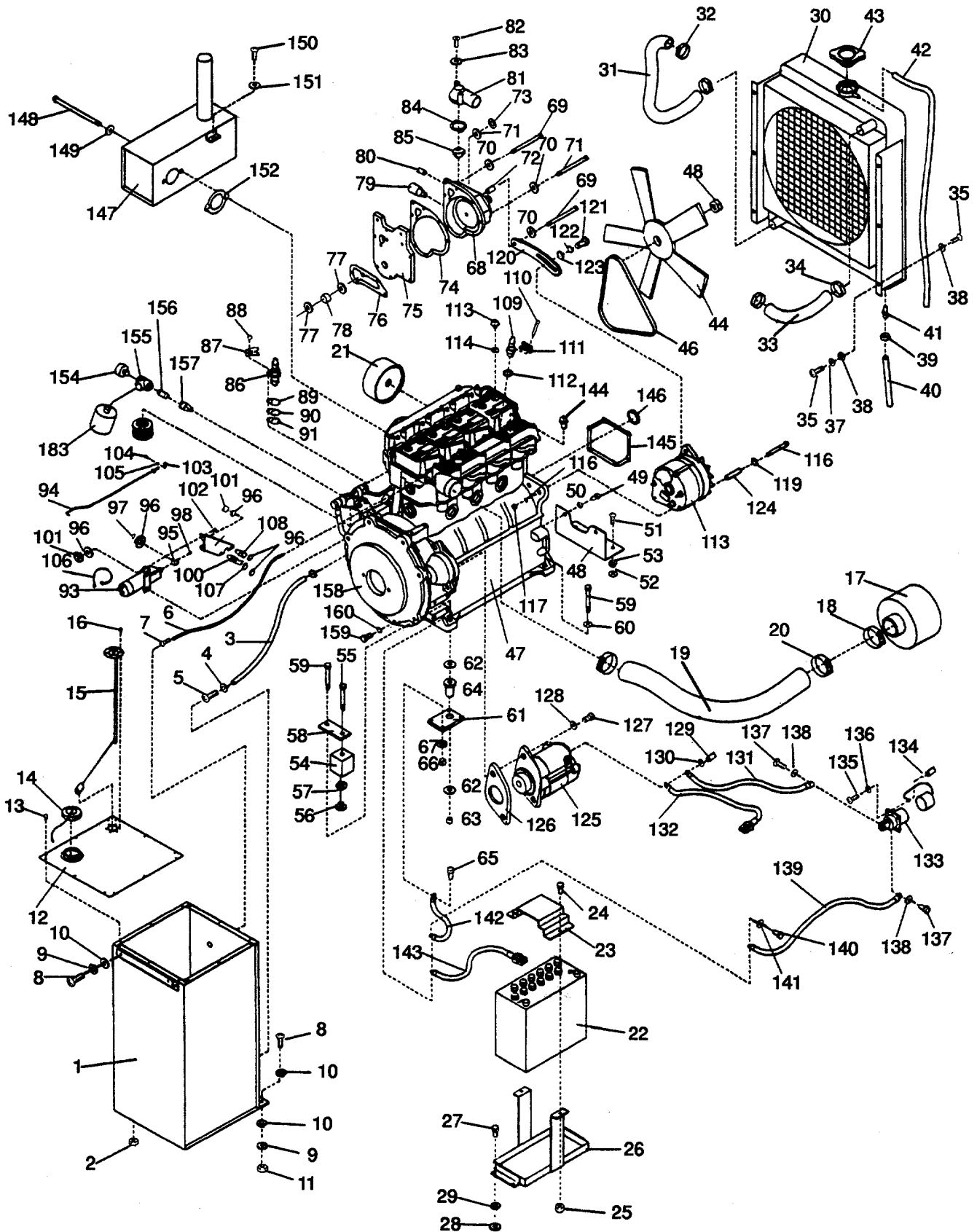


Figure 4. Drive System.

SECTION II

TM-5-1730-245-24P

(1) ITEM NO.	(2) SMR CODE	(3) NSN	(4) CAGEC	(5) PART NUMBER	(6) DESCRIPTION AND USABLE ON CODES(UOC)	(7) QTY
GROUP 04 DRIVE SYSTEM						
FIG. 4 DRIVE SYSTEM						
1	XBFZZ		29516	9305-117	RESERVOIR,FUEL.....	1
2	XBFZZ		93061	1/4HP-S	PLUG	1
3	PAFZZ		29516	9305-426	HOSE,FUEL SUPPLY.....	1
4	XBFZZ		06915	HSS-08	CLAMP,HOSE	2
5	PAFZZ		29516	125HBL-4-4	FITTING,BRASS	1
6	PAFZZ	4720014114003	97947	000-06477	HOSE,NONMETALLIC.....	1
7	XBFZZ		93061	30128-2L-2B	FITTING,BRASS	1
8	XBFZZ	5305000680502	96906	MS90725-6	SCREW,CAP,HEXAGON H.....	16
9	PAFZZ	5310005825965	96906	MS35338-44	WASHER,LOCK	14
10	XBFZZ	5310013330060	96906	MS51412-23	WASHER,FLAT	14
11	XBFZZ		96906	MS35649-22	NUT,HEX.....	12
12	XBFZZ		29516	9305-117-3	COVER,FUEL.....	1
13	XBFZZ		96906	MS51840-44	SCREW	17
14	PAFZZ		29516	9305-214	CAP,FUEL.....	1
15	PAFZZ		09527	LS6022	SENDER,FUEL LEVEL	1
16	XBFZZ		96906	MS51840-44	SCREW	17
17	PAFZZ		29516	9305-218	FILTER,AIR.	1
18	XBFZZ		06915	HSS-36	CLAMP	3
19	PAFZZ		29516	9305-428	HOSE,AIR INTAKE.....	1
20	XBFZZ		06915	HSS-36	CLAMP	3
21	PAFZZ		29516	9305-215	FILTER,OIL	1
22	PCFZZ		96906	MIL-B-111881/2	BATTERY.....	1
23	PAFZZ		29516	9305-139	FLANGE,ACCESS.....	1
24	XBFZZ	5305000680502	96906	MS90725-6	SCREW,CAP,HEXAGON H	16
25	PAFZZ	5310004838792	96906	MS17829-4C	NUT,SELF-LOCKING,HE	2
26	PAFZZ		29516	9305-116	CONTAINER,BATTERY	1
27	XBFZZ	5305000680502	96906	MS90725-6	SCREW,CAP,HEXAGON H	16
28	XBFZZ		96906	MS35649-22	NUT,HEX.....	12
29	PAFZZ	5310005825965	96906	MS35338-44	WASHER,LOCK	14
30	XBFZZ		29516	9305-421	RADIATOR,ENGINE	1
31	PAFZZ		29516	9305-401	HOSE,RADIATOR,UPPER.....	1
32	XBFZZ		06915	HSS-20	CLAMP,HOSE	4
33	PAFZZ		29516	9305-402	HOSE,RADIATOR,LOWER.....	1
34	XBFZZ		06915	HSS-20	CLAMP,HOSE	4
35	XBFZZ	5305000680502	96906	MS90725-6	SCREW,CAP,HEXAGON H	16
36	XBFZZ		96906	MS35649-22	NUT,HEX	12
37	PAFZZ	5310005825965	96906	MS35338-44	WASHER,LOCK	14
38	XBFZZ	5310013330060	96906	MS51412-23	WASHER,FLAT	14
39	XBFZZ		OE328	5324K13	CLAMP,HOSE	1
40	PAFZZ		29516	9305-427	TUBE,RADIATOR,DRAIN	1
41	PAFZZ		29516	9305-429	VALVE,DRAIN	1
42	PAFZZ		29516	9305-430	TUBE,RADIATOR OVERF	1
43	PAFZZ		29516	9305-421-1	CAP,RADIATOR.....	1
44	PAFZZ		97947	751-41191	FAN.....	1
45	PAFZZ		97947	751-40520	NUT,LEFT HAND.....	1
46	PAFZZ		97947	000-07272	BELT,FAN	1
47	PAFFF		97947	LPW4-01	ENGINE BLOCK ASSY.....	1
48	XBFZZ		29516	9305-112	PLATE,SHIPPING.....	1

SECTION II

TM-5-1730-245-24P

(1) ITEM NO.	(2) SMR CODE	(3) NSN	(4) CAGEC	(5) PART NUMBER	(6) DESCRIPTION AND USABLE ON CODES(UOC)	(7) QTY
49	XBFZZ		I9008	M10.4017X20-CL8.	BOLT,HEX.....	2
50	PAFZZ		D8286	M10-127A-Z	WASHER,LOCK	7
51	XBFZZ		96906	MS90725-32	BOLT,HEX.....	29
52	XBFZZ	5310008299981	96906	MS35649-2312	NUT,PLAIN,HEXAGON.....	20
53	PAFZZ	5310004079566	96906	MS35338-45	WASHER,LOCK	20
54	XBFZZ		29516	9305-211	BLOCK,SHIPPING.....	2
55	XBFZZ	5305002693218	96906	MS90725-68	SCREW,CAP,HEXAGON H.....	2
56	XBFZZ	5310000563395	96906	MS35649-2382	NUT,PLAIN,HEXAGON.....	2
57	PAFZZ		96906	MS35338-46	WASHER,LOCK.....	2
58	XBFZZ		29516	9305-118	PLATE,SHIPPING REAR	2
59	XBFZZ		96906	MS90725-72	BOLT,HEX	4
60	XBFZZ	5310000446477	96906	MS51412-25	WASHER,FLAT.....	2
61	XBFZZ		29516	9305-213	PLATE,SHOCKMOUNT.....	4
62	PAFZZ		29516	9305-138	WASHER,SPECIAL.....	8
63	XBFZZ	5310004838790	96906	MS17829-6C	NUT,SELF-LOCKING,HE.....	4
64	PAFZZ		29516	9305-212	SHOCKMOUNT.....	4
65	XBFZZ	5306010758519	96906	MS90725-36	BOLT,MACHINE.....	16
66	XBFZZ	5310008299981	96906	MS35649-2312	NUT,PLAIN,HEXAGON.....	20
67	PAFZZ	5310004079566	96906	MS35338-45	WASHER,LOCK.....	20
68	PAFZZ		97947	750-40621	PUMP,WATER	1
69	XBFZZ		19008	M8-4014X75-CL8.8	BOLT.....	3
70	XBFZZ		D8286	M8-125A-Z	WASHER,FLAT	11
71	XBFZZ		I9008	M8-4014X45-CL8.8	BOLT.....	2
72	XBFZZ		97947	000-07271	SPACER.....	1
73	XBFZZ		I9008	M8-4032-CL8-Z	NUT.....	4
74	PAFZZ		97947	751-40211	GASKET.....	1
75	PAFZZ		97947	751-40203	PLATE, MOUNTING	1
76	PAFZZ		97947	751-40450	GASKET.....	1
77	PAFZZ	5330012077350	97947	601-20691	PACKING,PREFORMEO	2
78	PAFZZ		97947	751-40441	SLEEVE.....	1
79	PAFZZ		29516	9305-307	SWITCH,TEMPERATURE	1
80	PAFZZ		09527	GP0634	SENDER,TEMPERATURE	1
81	PAFZZ		97947	751-40111	HOUSING,THERMOSTAT	1
82	XBFZZ		I9008	M8-4014X60-CL8.8	BOLT,HEX	2
83	PAFZZ		D8286	M8-125A-Z	WASHER,FLAT	11
84	PAFZZ		97947	751-40280	GASKET.....	1
85	PAFZZ		97947	751-40981	THERMOSTAT	1
86	XBFZZ		97947	751-41201	PUMP,INJECTOR	4
87	XBFZZ		97947	751-11722	CLAMP,PUMP	4
88	XBFZZ		97947	751-11460	NUT,SPECIAL	4
89	KFFZZ		97947	750-11330-1	SHIM PART OF KIT P/N 750-11330	1
90	KFFZZ		97947	750-11330-2	SHIM PART OF KIT P/N 750-11330	1
91	KFFZZ		97947	750-11330-3	SHIM PART OF KIT P/N 750-11330	1
92	PAFZZ		29516	9305-216	ELEMENT,FILTER,FUEL	1
93	PAFZZ		97947	000-07115	SOLENOID,FUEL	1
94	KFFZZ		97947	754-17680	ROD PART OF KIT P/N 750-14160	1
95	KFFZZ		97947	757-16370	BRACKET,ROD PART OF KIT P/N 750-14160.....	1
96	KFFZZ		97947	785352	WASHER,FLAT PART OF KIT P/N 750-1460.....	8
97	KFFZZ		97947	027-01986	PIN,COTTER PART OF KIT P/N 9305 PART OF KIT P/N 750-14160	1

SECTION II

TM-5-1730-245-24P

(1) ITEM NO.	(2) SMR CODE	(3) NSN	(4) CAGEC	(5) PART NUMBER	(6) DESCRIPTION AND USABLE ON CODES(UOC)	(7) QTY
98	KFFZZ		97947	272-00660	SCREW PART OF KIT P/N 750-14160	1
99	KFFZZ		97947	751-17670	BRACKET,MOUNTING PART OF KIT P/N 750.. -14160	1
100	KFFZZ		97947	757-18240	STUD,SHOULDERED PART OF KIT P/N 750-... 14160	1
101	KFFZZ		97947	272-00679	NUT PART OF KIT P/N 750-14160	4
102	KFFZZ		97947	272-00693	BOLT PART OF KIT P/N 750-14160	2
103	KFFZZ		97947	751-15200	LEVER,STOP/RUN PART OF KIT P/N 750-..... 14160	1
104	KFFZZ		97947	272-00690	SCREW PART OF KIT P/N 750-14160	2
105	KFFZZ		97947	785351	WASHER PART OF KIT P/N 750-14160	1
106	KFFZZ		97947	757-16410	CABLE ASSEMBLY PART OF KIT P/N 750-..... 14160	1
107	KFFZZ		97947	272-00688	WASHER PART OF KIT P/N 750-14160	1
108	KFFZZ		97947	757-18510	ADAPTER,STUD PART OF KIT P/N 750-..... 14160	1
109	PAFZZ		97947	751-15880	INJECTOR,FUEL.....	4
110	PAFZZ		97947	751-12530	BOLT,SPECIAL	4
111	PAFZZ		97947	751-10580	CLAMP,INJECTOR	4
112	PAFZZ		97947	201-45070	GASKET,COPPER	4
113	PAFZZ		97947	751-12710	NUT,SPECIAL	8
114	PAFZZ	5330010877373	97947	201-81200	SEAL,SPECIAL.....	8
115	XBFZZ		97947	000-05809	ALTERNATOR,24V	1
116	XBFZZ		D8286	M8-912X100-CL8.8	BOLT,SOCKET HEAD	1
117	XBFZZ		19008	M8-4032-CL8-Z	NUT	4
118	PAFZZ		D8286	M8-127A-Z	WASHER,LOCK	4
119	XBFZZ		D8286	M8-125A-Z	WASHER,FLAT	11
120	XBFZZ		97947	000-05440	BRACKET,ALTERNATOR	1
121	XBFZZ		19008	M8-4017X20-CL8.8	BOLT	1
122	PAFZZ		D8286	M8-127A-Z	WASHER,LOCK	4
123	XBFZZ		D8286	M8-125A-Z	WASHER,FLAT	11
124	XBFZZ		97947	750-13290	STARTER	1
126	XBFZZ		97947	751-16260	SPACER,STARTER	1
127	XBFZZ		19008	M12-4017X50-CL8.	BOLT	2
128	XBFZZ		D8286	M12-125A-Z	WASHER,FLAT	2
129	XBFZZ		19008	M8-4032-CL8-Z	NUT	4
130	PAFZZ		D8286	M8-127A-Z	WASHER,LOCK	1
131	XBFZZ		29516	9305-306	CABLE ASSEMBLY	1
132	XBFZZ		29516	9305-303	CABLE ASSEMBLY	1
133	XBFZZ		96906	MS52131-1	CONNECTOR,ELECTRIC	1
134	XBFZZ	5305009897434	96906	MS35207-263	SCREW,MACHINE.....	4
135	XBFZZ	5310009349751	96906	MS35650-302	NUT,PLAIN,HEXAGON	4
136	PAFZZ	5310000453296	96906	MS35338-43	WASHER,LOCK.....	4
137	PAFZZ	5306002264822	80204	B1821BHO31C050N	BOLT,MACHINE.....	2
138	PAFZZ	5310004079566	96906	MS35338-45	WASHER,LOCK.....	4
139	XBFZZ		2951,6	9305-302	CABLE ASSEMBLY	1
140	XBFZZ		19008	M10-4017X20-CL8.	BOLT,HEX	1
141	PAFZZ		D8286	M10-127A-Z	WASHER,LOCK	7
142	XBFZZ		29516	9305-304	CABLE ASSEMBLY	1
143	XBFZZ		29516	9305-305	CABLE ASSEMBLY	1
144	PAFZZ		97947	364830	GLOW PLUG	2

SECTION II

TM-5-1730-245-24P

(1) ITEM NO.	(2) SMR CODE	(3) NSN	(4) CAGEC	(5) PART NUMBER	(6) DESCRIPTION AND USABLE ON CODES(UOC)	(7) QTY
145	PAFZZ		97947	751-12800	GASKET,GEAR COVER	1
146	PAFZZ		97947	751-10390	SEAL,LIP	1
147	PAFZZ		29516	9305-110	MUFFLER.....	1
148	XBFZZ		I9008	M10-4014X160-CL8	BOLT,HEX	2
149	PAFZZ		D8286	M10-127A-Z	WASHER,LOCK	7
150	XBFZZ		I9008	M8-4017X10-CL8.8	BOLT,HEX	1
151	XBFZZ		D8286	M8-127A-Z	WASHER,LOCK	4
152	PAFZZ		29516	9305-110-4	GASKET	1
153	PAFZZ		09527	SD0006	SENDER,OIL PRESSURE	1
154	PAFZZ		13445	8647	SWITCH,OIL PRESSURE	1
155	XBFZZ		93061	1/8MMO-B	TEE,BRASS	1
156	XBFZZ		93061	125PN-2	NIPPLE,BRASS.....	1
157	PAFZZ		97947	757-17650	ADAPTER,BUSHING.....	1
158	PAFZZ		97947	757-13204	ADAPTER,HYD PUMP.....	1
159	PAFZZ		97947	752674	SCREW.....	1
160	PAFZZ		97947	785613	WASHER,FLAT	1
	PAFZZ		29516	750-14160	KIT,MOUNTING,FUEL	1
					ADAPTER,STUD (1) 4-108	
					ADAPTER,STUD (1) 4-108	
					BOLT (2) 4-102	
					BOLT (2) 4-102	
					BRACKET,ROD (1) 4-95	
					BRACKET,ROD (1) 4-95	
					BRACKET,MOUNTING (1) 4-99	
					BRACKET,MOUNTING (1) 4-99	
					CABLE ASSEMBLY (1) 4-106	
					CABLE ASSEMBLY (1) 4-106	
					LEVER,STOP/RUN (1) 4-103	
					LEVER,STOP/RUN (1) 4-103	
					NUT (4) 4-101	
					NUT (4) 4-101	
					PIN,COTTER (1) 4-97	
					PIN,COTTER (1) 4-97	
					ROD (1) 4-94	
					ROD (1) 4-94	
					SCREW (1) 4-98	
					SCREW (1) 4-98	
					SCREW (2) 4-104	
					SCREW (2) 4-104	
					STUD,SHOULDERED (1) 4-100	
					STUD,SHOULDERED (1) 4-100	
					WASHER (1) 4-105	
					WASHER (1) 4-105	
					WASHER (1) 4-107	
					WASHER (1) 4-107	
					WASHER,FLAT (8) 4-96	
					WASHER,FLAT (8) 4-96	
	PAFZZ		97947	750-11330	KIT,SHIM	1
					SHIM (1) 4-89	
					SHIM (1) 4-89	
					SHIM (1) 4-90	
					SHIM (1) 4-90	

SECTION II

TM-5-1730-245-24P

(1) ITEM NO.	(2) SMR CODE	(3) NSN	(4) CAGEC	(5) PART NUMBER	(6) DESCRIPTION AND USABLE ON CODES(UOC)	(7) QTY
					SHIM (1) 4-91	
					SHIM (1) 4-91	

END OF FIGURE

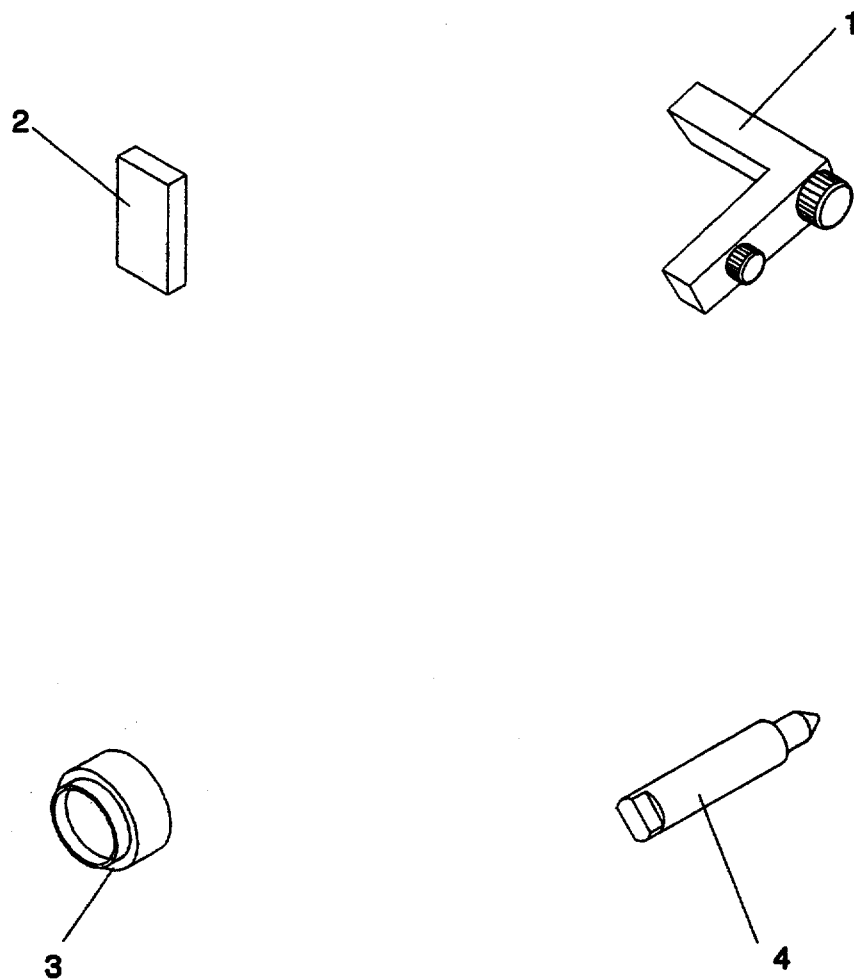


Figure 5. Special Tools.

SECTION III

TM-5-1730-245-24P

(1) ITEM NO.	(2) SMR CODE	(3) NSN	(4) CAGEC	(5) PART NUMBER	(6) DESCRIPTION AND USABLE ON CODES(UOC)	(7) QTY
GROUP 05 SPECIALTOOLS						
FIG. 5 SPECIALTOOLS						
1	PAFZZ		29516	9305-801	GAUGE,RACK SETTING.....	1
2	PAFZZ		29516	9305-802	GAUGE,GOVERNOR	1
3	PAFZZ		29516	9305-803	TOOL,GEAR END SEAL	1
4	PAFZZ		29516	9305-804	TOOL,FLYWHEEL LOCK	1

END OF FIGURE

CROSS-REFERENCE INDEXES

STOCK NUMBER	NATIONAL STOCK NUMBER INDEX				ITEM
	FIG.	ITEM	STOCK NUMBER	FIG.	
5920-00-011-7142	1	40	5330-01-087-7373	4	114
5310-00-045-3296	1	12	4730-01-093-8464	3	73
	1	34	5330-01-207-7350	4	77
	1	53	4720-01-411-4003	4	6
	2	33			
	2	54			
	3	37			
	3	41			
	3	47			
	3	51			
	4	136			
5305-00-068-0500	3	89			
5930-00-221-8992	1	1			
5306-00-226-4822	4	137			
5310-00-261-8278	1	16			
	1	22			
	1	28			
	1	48			
5330-00-285-9842	3	66			
5320-00-343-5435	2	14			
	2	23			
	2	26			
	2	29			
5310-00-407-9566	2	7			
	3	21			
	4	53			
	4	67			
	4	138			
5319-00-483-8792	4	25			
5310-00-543-2410	1	43			
5330-00-582-2577	3	63			
5310-00-582-5965	2	19			
	3	3			
	3	80			
	3	83			
	3	86			
	3	90			
	3	97			
	3	101			
	4	9			
	4	29			
	4	37			
5330-00-816-3546	3	56			
5310-00-839-2066	1	37			
5310-00-934-9762	1	15			
	1	27			
5310-00-997-1888	3	5			
5325-00-998-3351	2	36			
	2	57			
5310-01-056-0177	3	71			

CROSS-REFERENCE INDEXES

CAGEC	PART NUMBER	PART NUMBER INDEX STOCK NUMBER	FIG.	ITEM
07707	AD43AH	5320-00-343-5435	2	14
			2	23
			2	26
			2	29
93061	AN912-13		3	54
09527	AP0532		1	46
09527	BL0037		1	19
			1	25
			1	31
			1	50
80204	B1821BH031C050N	5306-00-226-4822	4	137
60012	CD-109		2	21
			2	24
			2	27
OJVY1	DH2ULVJN		3	19
OJVY1	FB-G		3	10
OJVY1	FB-08OBN		3	11
OJVY1	FBB-080-40		3	8
81349	F02A125V10A	5920-00-011-7142	1	40
09527	GP0634		1	14
09527	GP0709		1	26
09527	GPO803		1	20
09527	GP0634		4	80
09527	GY0094F		1	18
09527	GY0099F		1	24
			1	30
0691.	HSS-08		4	4
06915	HSS-20		4	32
			4	34
06915	HSS-36		4	18
			4	20
75915	HW0126		1	54
97947	LPW4-01		4	47
09527	LS6022		4	15
09527	MH0042		1	51
96906	MIL-B-111881/2		4	22
96906	MS15759-946		1	17
			1	23
			1	29
			1	49
96906	MS17829-4C	5310-00-483-8792	4	25
96906	MS17829-6C		4	63
96906	MS28775-012		3	107
96906	MS28778-04		3	109
96906	MS28778-08		3	106
96906	MS28778-10	5330-00-285-9842	3	66
96906	MS28778-20	5330-00-816-3546	3	56
96906	MS35206-217		1	45
96906	MS35207-263		2	32
			2	53
			3	40

CROSS-REFERENCE INDEXES

CAGEC	PART NUMBER	PART NUMBER INDEX STOCK NUMBER	FIG.	ITEM
96906	MS35207-263		3	50
			4	134
96906	MS35207-269		3	36
			3	46
96906	MS35338-100	5310-00-261-8278	1	16
			1	22
			1	28
			1	48
96906	MS35338-40	5310-00-543-2410	1	43
96906	MS35338-43	5310-00-045-3296	1	12
			1	34
			1	53
			2	33
			2	54
			3	37
			3	41
			3	47
			3	51
			4	136
96906	MS35338-44	5310-00-582-5965	2	19
			3	3
			3	80
			3	83
			3	86
			3	90
			3	97
			3	101
			4	9
			4	29
			4	37
96906	MS35338-45	5310-00-407-9566	2	7
			3	21
			4	53
			4	67
			4	138
96906	MS35338-46		4	57
96906	MS35649-22		4	11
			4	28
			4	36
96906	MS35649-2252		2	20
		5310-00-997-1888	3	5
			3	98
96906	MS35649-2312		2	8
			4	52
			4	66
96906	MS35649-2382		4	56
96906	MS35649-242		1	42
96906	MS35649-282		1	11
			1	33
96906	MS35649-286	5310-00-934-9762	1	15
			1	21

SECTION IV

TM5-1730-245-24P

CROSS-REFERENCE INDEXES

CAGEC	PART NUMBER	PART NUMBER INDEX STOCK NUMBER	FIG.	ITEM
96906	MS35649-286	5310-00-934-9762	1	27
			1	47
96906	MS35650-302	1	52	
			2	34
			2	55
			3	38
			3	42
			3	48
			3	52
			4	135
96906	MS35691-45	5310-00-839-2066	1	37
96906	MS51412-19		1	44
96906	MS51412-23		3	4
			3	87
			4	10
			4	38
96906	MS51412-25		4	60
96906	MS51512-B12		3	53
96906	MS51525-B04		3	113
96906	MS51525-B10		3	65
96906	NS51525-B12		3	62
96906	MS51525-B20		3	55
96906	MS51527-B04		3	110
96906	MS51527-B10		3	67
96906	MS51529-B10		3	68
96906	MS51529-B12		3	69
96906	MS51575-25		3	22
96906	MS51840-44		2	10
			2	12
			2	41
			2	45
			4	13
			4	16
96906	MS51850-44		1	57
			2	39
			2	48
			2	50
			3	7
			3	9
96906	MS51860-11		3	57
96906	MS51860-57	5310-01-056-0177	3	71
96906	MS51860-58	4730-01-093-8464	3	73
93061	MS51953C-73		3	59
96906	MS52131-1		4	133
96906	MS9020-12	5330-00-582-2577	3	63
96906	MS90725-16		3	100
96906	MS90725-3		3	79
			3	82
			3	85
		5305-00-068-0500	3	89
			3	95

CROSS-REFERENCE INDEXES

CAGEC	PART NUMBER	PART NUMBER INDEX STOCK NUMBER	FIG.	ITEM
96906	MS90725-32		2	6
			3	20
			4	51
96906	MS90725-36		4	65
96906	MS90725-6		2	18
			3	2
			3	96
			4	8
			4	24
			4	27
			4	35
96906	MS90725-68		4	55
96906	MS90725-72		4	59
19008	M10.4017X20-CL8.		4	49
D8286	M10-125A-Z		3	16
D8286	M10-127A-Z		3	15
			4	50
			4	141
			4	149
19008	M10-4014X160-CL8		4	148
19008	M10-4017X20-CL8.		4	140
19008	M100-4017X30-CL8.		3	14
D8286	M10-912X30-CL8.8		3	18
D8286	M12-125A-Z		4	128
19008	M12-4017X50-CL8.		4	127
D8286	M8-125A-Z		4	70
			4	83
			4	119
			4	123
D8286	M8-127A-Z		4	118
			4	122
			4	130
			4	151
19008	M8-4014X45-CL8.8		4	71
19008	M8-4014X60-CL8.8		4	82
19008	M8-4014X75-CL8.8		4	69
19008	M8-4017X10-CL8.8		4	150
19008	M8-4017X20-CL8.8		4	121
19008	M8-4032-CL8-Z		4	73
			4	117
			4	129
D8286	M8-912X100-CL8.8		4	116
60012	ND-1252		2	22
			2	25
09527	SD0006		4	153
97947	000-05440		4	120
97947	000-05441		4	124
97947	000-05809		4	115
97947	000-06477	4720-01-411-4003	4	6
97947	000-07115		4	93
97947	000-07271		4	72

CROSS-REFERENCE INDEXES

CAGEC	PART NUMBER	PART NUMBER INDEX STOCK NUMBER	FIG.	ITEM
97947	000-07272		4	46
97947	027-01986		4	98
93061	1/4HP-S		4	2
93061	1/8MM0-B		4	155
04198	101A167-07		1	1.3
			1	35
29516	125HBL-4-4		4	5
93061	125PN-2		4	156
OPCZD	1251		1	56
04198	20DW1001TH01B		1	10
			1	32
97947	201-45070		4	112
97947	201—81200	5330-01-087-7373	4	114
73752	2525		3	60
13445	2609SC		1	55
97947	272-00660		4	98
97947	272-00679		4	1-01
97947	272-00688		4	107
97947	272-00690		4	104
97947	272-00693		4	102
93061	30128-2L-2B		4	7
75915	342048		1	39
97947	364830		4	144
6238L9	46202LR		1	41
OE328	5324K13		4	39
97947	601-20691	5330-01-207-7350	4	77
97947	750-11330		4	162
97947	750-11330-1		4	89
97947	750-11330-2		4	90
97947	750-11330-3		4	91
97947	750-12380		3	17
97947	750-13290		4	125
29516	750-14160		4	161
97947	750-40621		4	68
97947	751-10390		4	146
97947	751-10580		4	111
97947	751-11460		4	88
97947	751-11722		4	87
97947	751-12530		4	110
97947	751-12710		4	113
97947	751-12800		4	145
97947	751-15200		4	103
97947	751-15880		4	109
97947	751-16260		4	126
97947	751-17670		4	99
97947	751-40111		4	81
97947	751-40203		4	75
97947	751-40211		4	74
97947	751-40280		4	84
97947	751-40441		4	78
97947	751-40450		4	76

CROSS-REFERENCE INDEXES

CAGEC	PART NUMBER	PART NUMBER INDEX STOCK NUMBER	FIG.	ITEM
97947	751-40520		4	45
97947	751-40981		4	85
97947	751-41191		4	44
97947	751-41201		4	86
97947	752674		4	159
97947	754-17680		4	94
97947	757-13204		4	158
97947	757-16370		4	95
97947	757-16410		4	106
97947	757-17650		4	157
97947	757-18240		4	100
97947	757-18510		4	108
97947	785351		4	105
97947	785352		4	96
97947	785613		4	160
13445	8304		1	3
			1	6
13445	8307		1	2
13445	83355		1	8
94222	85-15-160-16		2	35
			2	56
96906	85-24-201-20		2	37
94222	85-47-101-15	5325-00-998-3351	2	36
			2	57
13445	8507		1	5
13445	85753		1	9
13445	8647		4	154
13445	9095	5930-00-221-8992	1	1
13445	9115		1	4
29516	9305-101		2	58
29516	9305-105		2	40
29516	9305-106		2	1
29516	9305-109		3	94
29516	9305-110		4	147
29516	9305-110-4		4	152
29516	9305-111		2	42
29516	9305-112		4	48
29516	9305-113		3	1
29516	9305-113-3		3	6
29516	9305-114		2	47
29516	9305-115		2	49
29516	9305-116		4	26
29516	9305-117		4	1
29516	9305-117-3		4	12
29516	9305-118		4	58
29516	9305-119-1		3	39
29516	9305-119-2		3	35
29516	9305-120-1		3	49
29516	9305-120-2		3	45
29516	9305-121		2	2
29516	9305-122		2	3

CROSS-REFERENCE INDEXES

CAGEC	PART NUMBER	PART NUMBER INDEX STOCK NUMBER	FIG.	ITEM
29516	9305-123		2	4
29516	9305-124		2	5
29516	9305-125		2	43
29516	9305-126		2	17
29516	9305-127		2	9
29516	9305-128		2	11
29516	9305-129		2	13
29516	9305-130		2	16
29516	9305-131		2	15
29516	9305-132		2	30
29516	9305-133		2	31
			2	52
29516	9305-134		2	38
29516	9305-135		2	44
29516	9305-136		2	51
29516	9305-137		3	12
29516	9305-138		4	62
29516	9305-139		2	28
			4	23
29516	9305-201-1		3	93
29516	9305-201-2		3	99'
29516	9305-201-3		3	64
29516	9305-201-4		3	103
29516	9305-201-6		3	104
29516	9305-202		3	105
29516	9305-203		3	81
29516	9305-204		3	78
29516	9305-205		3	76
29516	9305-205-1		3	77
29516	9305-206		3	74
29516	9305-206-1		3	75
29516	9305-207		3	102
29516	9305-208		3	70
29516	9305-209		3	72
29516	9305-210		1	36
29516	9305-211		4	54
29516	9305-212		4	64
29516	9305-213		4	61
29516	9305-214		4	14
29516	9305-215		4	21
29516	9305-216		4	92
29516	9305-217		3	23
29516	9305-218		4	17
29516	9305-219		3	13
29516	9305-220		1	38
29516	9305-221		3	88
29516	9305-222		2	46
29516	9305-223		3	108
29516	9305-302		4	139
29516	9305-303		4	132
29516	9305-304		4	142

CROSS-REFERENCE INDEXES

CAGEC	PART NUMBER	PART NUMBER INDEX STOCK NUMBER	FIG.	ITEM
29516	9305-305		4	143
29516	9305-306		4	131
29516	9305-307		4	79
29516	9305-401		4	31
29516	9305-402		4	33
29516	9305-407		3	24
29516	9305-408		3	25
29516	9305-409		3	26
29516	9305-410		3	27
29516	9305-411		3	28
29516	9305-412		3	29
29516	9305-413		3	30
29516	9305-414		3	31
29516	9305-415		3	32
29516	9305-416		3	33
29516	9305-417		3	34
29516	9305-418		3	43
29516	9305-419		3	44
29516	9305-420		3	84
29516	9305-421		4	30
29516	9305-421-1		4	43
29516	9305-422		3	91
29516	9305-423		3	92
29516	9305-424		3	58
29516	9305-425		3	61
29516	9305-426		4	3
29516	9305-427		4	40
29516	9305-428		4	19
29516	9305-429		4	41
29516	9305-430		4	42
29516	9305-431		3	111
29516	9305-432		3	112
29516	9305-801		5	1
29516	9305-802		5	2
29516	9305-803		5	3
29516	9305-804		5	4
13445	95509		1	7

CROSS-REFERENCE INDEXES

FIG.	ITEM	FIGURE AND ITEM NUMBER INDEX STOCK NUMBER	CAGEC	PART NUMBER
1	1	5930-00-221-8992	13445	9095
1	2		13445	8307
1	3		13445	8304
1	4		13445	9115
1	5		13445	8507
1	6		13445	8304
1	7		13445	95509
1	8		13445	83355
1	9		13445	85753
1	10		04198	20W1001TH01B
1	11		96906	MS35649-282
1	12	5310-00-045-3296	96906	MS35338-43
1	13		04198	101A167-07
1	14		09527	GP0634
1	15	5310-00-934-9762	96906	MS35649-286
1	16	5310-00-261-8278	96906	MS35338-100
1	17		96906	MS15759-946
1	18		09527	GY0094F
1	19		09527	BL0037
1	20		09527	GP0803
1	21		96906	MS35649-286
1	22	5310-00-261-8278	96906	MS35338-100
1	23		96906	MS15759-946
1	24		09527	GY0099F
1	25		09527	BL0037
1	26		09527	GP0709
1	27	5310-00-934-9762	96906	MS35649-286
1	28	5310-00-261-8278	96906	MS35338-100
1	29		96906	MS15759-946
1	30		09527	GY0099F
1	31		09527	BL0037
1	32		04198	20W1001TH01B
1	33		96906	MS35649-282
1	34	5310-00-045-3296	96906	MS35338-43
1	35		04198	101A167-07
1	36		29516	9305-210
1	37	5310-00-839-2066	96906	MS35691-45
1	38		29516	9305-220
1	39		75915	342048
1	40	5920-00-011-7142	81349	F02A125V10A
1	41		62389	46202LR
1	42		96906	MS35649-242
1	43	5310-00-543-2410	96906	MS35338-40
1	44		96906	MNS51412-19
1	45		96906	MS35206-217
1	46		09527	AP0532
1	47		96906	MS35649-286
1	48	5310-00-261-8278	96906	MS35338-100
1	49		96906	MS15759-946
1	50		09527	BL0037
1	51		09527	MH0042

CROSS-REFERENCE INDEXES

FIG.	ITEM	FIGURE AND ITEM NUMBER INDEX STOCK NUMBER	CAGEC	PART NUMBER
1	52		96906	MS35650-302
1	53	5310-00-045-3296	96906	MS35338-43
1	54		75915	HW0126
1	55		13445	2609SC
1	56		OPCZO	1251
1	57		96906	MS51850-44
2	1		29516	9305-106
2	2		29516	9305-121
2	3		29516	9305-122
2	4		29516	9305-123
2	5		29516	9305-124
2	6		96906	MS90725-32
2	7	5310-00-407-9566	96906	MS35338-45
2	8		96906	MS35649-2312
2	9		29516	9305-127
2	10		96906	MS51840-44
2	11		29516	9305-128
2	12		96906	MS51840-44
2	13		29516	9305-129
2	14	5320-00-343-5435	07707	AD43AH
2	15		29516	9305-131
2	16		29516	9305-130
2	17		29516	9305-126
2	18		96906	MS90725-6
2	19	5310-00-582-5965	96906	MS35338-44
2	20		96906	MS35649-2252
2	21		60012	CD-109
2	22		60012	ND-1252
2	23	5320-00-343-5435	07707	AD43AH
2	24		60012	CD-109
2	25		60012	ND-1252
2	26	5320-00-343-5435	07707	AD43AH
2	27		60012	CD-109
2	28		29516	9305-139
2	29	5320-00-343-5435	07707	AD43AH
2	30		29516	9305-132
2	31		29516	9305-133
2	32		96906	MS35207-263
2	33	5310-00-045-3296	96906	MS35338-43
2	34		96906	MS35650-302
2	35		94222	85-15-160-16
2	36	5325-00-998-3351	94222	85-47-101-15
2	37		96906	85-24-201-20
2	38		29516	9305-134
2	39		96906	MS51850-44
2	40		29516	9305-105
2	41		96906	MS51840-44
2	42		29516	9305-111
2	43		29516	9305-125
2	44		29516	9305-135
2	45		96906	MS51840-44

CROSS-REFERENCE INDEXES

FIG.	ITEM	FIGURE AND ITEM NUMBER INDEX STOCK NUMBER	CAGEC	PART NUMBER
2	46		29516	9305-222
2	47		29516	9305-114
2	48		96906	MS51850-44
2	49		29516	9305-115
2	50		96906	MS51850-44
2	51		29516	9305-136
2	52		29516	9305-133
2	53		96906	MS35207-263
2	54	5310-00-045-3296	96906	MS35338-43
2	55		96906	MS35650-302
2	56		94222	85-15-160-16
2	57	5325-00-998-3351	94222	85-47-101-15
2	58		29516	9305-101
3	1		29516	9305-113
3	2		96906	MS90725-6
3	3	5310-00-582-5965	96906	MNS35338-44
3	4		96906	MS51412-23
3	5	5310-00-997-1888	96906	MS35649-2252
3	6		29516	9305-113-3
3	7		96906	MS51850-44
3	8		OJVY1	FBB-080-40
3	9		96906	MS51850-44
3'	10		OJVY1	FB-G
3	11		OJVY1	FB-O80BN
3	12		29516	9305-137 1
3	13		29516	9305-219
3	14		19008	M10-4017X30-CL8.
3	15		D8286	M10-127A-Z
3	16		D8286	M10-125A-Z
3	17		97947	750-12380
3	18		D8286	M10-912X30-CL8.8
3	19		OJVY1	DH2ULVJN
3	20		96906	MS90725-32
3	21	5310-00-407-9566	96906	MS35338-45
3	22		96906	NS51575-25
3	23		29516	9305-217
3	24		29516	9305-407
3	25		29516	9305-408
3	26		29516	9305-409
3	27		29516	9305-410
3	28		29516	9305-411
3	29		29516	9305-412
3	30		29516	9305-413
3	31		29516	9305-414
3	32		29516	9305-415
3	33		29516	9305-416
3	34		29516	9305-417
3	35		29516	9305-119-2
3	36		96906	MS35207-269
3	37	5310-00-045-3296	96906	MS35338-43
3	38		96906	MS35650-302

CROSS-REFERENCE INDEXES

FIG.	ITEM	FIGURE AND ITEM NUMBER INDEX STOCK NUMBER	CAGEC	PART NUMBER
3	39		29516	9305-119-1
3	40		96906	MS35207-263
3	41	5310-00-045-3296	96906	MS35338-43
3	42		96906	MS35650-302
3	43		29516	9305-418
3	44		29516	9305-419
3	45		29516	9305-120-2
3	46		96906	MS35207-269
3	47	5310-00-045-3296	96906	MS35338-43
3	48		96906	MS35650-302
3	49		29516	9305-120-1
3	50		96906	MS35207-263
3	51	5310-00-045-3296	96906	MS35338-43
3	52		96906	MS35650-302
3	53		96906	MS51512-B12
3	54		93061	AN912-13
3	55		96906	MS51525-B20
3	56	5330-00-816-3546	96906	MS28778-20
3	57		96906	MS51860-11
3	58		29516	9305-424
3	59		93061	MS51953C-73
3	60		73752	2525
3	61		29516	9305-425
3	62		96906	MS51525-B12
3	63	5330-00-582-2577	96906	MS9020-12
3	64		29516	9305-201-3
3	65		96906	MS51525-B10
3	66	5330-00-285-9842	96906	MS28778-10
3	67		96906	MS51527-B10
3	68		96906	MS51529-B10
3	69		96906	MS51529-B12
3	70		29516	9305-208
3	71	5310-01-056-0177	96906	MS51860-57
3	72		29516	9305-209
3	73	4730-01-093-8464	96906	MS51860-58
3	74		29516	9305-206
3	75		29516	9305-206-1
3	76		29516	9305-205
3	77		29516	9305-205-1
3	78		29516	9305-204
3	79		96906	MS90725-3
3	80	5310-00-582-5965	96906	MS35338-44
3	81		29516	9305-203
3	82		96906	MS90725-3
3	83	5310-00-582-5965	96906	MS35338-44
3	84		29516	9305-420
3	85		96906	MS90725-3
3	86	5310-00-582-5965	96906	MS35338-44
3	87		96906	MS51412-23
3	88		29516	9305-221
3	89	5305-00-068-0500	96906	MS90725-3

CROSS-REFERENCE INDEXES

FIG.	ITEM	FIGURE AND ITEM NUMBER INDEX STOCK NUMBER	CAGEC	PART NUMBER
3	90	5310-00-582-5965	96906	MS35338-44
3	91		29516	9305-422
3	92		29516	9305-423
3	93		29516	9305-201-1
3	94		29516	9305-109
3	95		96906	MS90725-3
3	96		96906	MS90725-6
3	97	5310-00-582-5965	96906	MS35338-44
3	98		96906	M'535649-2252
3	99		29516	9305-201-2
3	100		96906	MS90725-16
3	101	5310-00-582-5965	96906	MS35338-44
3	102		29516	9305-207
3	103		29516	9305-201-4
3	104		29516	9305-201-6
3	105		29516	9305-202
3	106		96906	MS28778-08
3	107		96906	MS28775-012
3	108		29516	9305-223
3	109		96906	MS28778-04
3	110		96906	MS51527-B04
3	111		29516	9305-431
3	112		29516	9305-432
3	113		96906	MS51525-B04
4	1		29516	9305-117
4	2		93061	1/4HP-S
4	3		29516	9305-426
4	4		06915	HSS-08
4	5		29516	125HBL-4-4
4	6	4720-01-411-4003	97947	000-06477
4	7		93061	30128-2L-2B
4	8		96906	fMS90725-6
4	9	5310-00-582-5965	96906	MS35338-44
4	10		96906	MS51412-23
4	11		96906	MS35649-22
4	12		29516	9305-117-3
4	13		96906	MS51840-44
4	14		29516	9305-214
4	15		09527	LS6022
4	16		96906	MS51840-44
4	17		29516	9305-218
4	18		06915	HSS-36
4	19		29516	9305-428
4	20		06915	HSS-36
4	21		29516	9305-215
4	22		96906	MIL-B-111881/2
4	23		29516	9305-139
4	24		96906	MS90725-6
4	25	5310-00-483-8792	96906	MS17829-4C
4	26		29516	9305-116
4	27		96906	MS90725-6

CROSS-REFERENCE INDEXES

FIG.	ITEM	FIGURE AND ITEM NUMBER INDEX STOCK NUMBER	CAGEC	PART NUMBER
4	28		96906	MS35649-22
4	29	5310-00-582-5965	96906	MS35338-44
4	30		29516	9305-421
4	31		29516	9305-401
4	32		06915	HSS-20
4	33		29516	9305-402
4	34		06915	HSS-20
4	35		96906	MS90725-6
4	36		96906	MS35649-22
4	37	5310-00-582-5965	96906	MS35338-44
4	38		96906	MS51412-23
4	39		OE328	5324K13
4	40		29516	9305-427
4	41		29516	9305-429
4	42		29516	9305-430
4	43		29516	9305-421-1
4	44		97947	751-41191
4	45		97947	751-40520
4	46		97947	000-07272
4	47		97947	LPW4-01
4	48		29516	9305-112
4	49		19008	M10.4017X20-CL8.
4	50		D8286	M10-127A-Z
4	51		96906	MS90725-32
4	52		96906	MS35649-2312
4	53	5310-00-407-9566	96906	MS35338-45
4	54		29516	9305-211
4	55		96906	MS90725-68
4	56		96906	MS35649-2382
4	57		96906	MS35338-46
4	58		29516	9305-118
4	59		96906	MS90725-72
4	60		96906	MS51412-25
4	61		29516	9305-213
4	62		29516	9305-138
4	63		96906	MS17829-6C
4	64		29516	9305-212
4	65		96906	MS90725-36
4	66		96906	MS35649-2312
4	67	5310-00-407-9566	96906	MS35338-45
4	68		97947	750-40621
4	69		19008	M8-4014X75-CL8.8
4	70		D8286	M8-125A-Z
4	71		19008	M8-4014X45-CL8.8
4	72		97947	000-07271
4	73		19008	M8-4032-CL8-Z
4	74		97947	751-40211
4	75		97947	751-40203
4	76		97947	751-40450
4	77	5330-01-207-7350	97947	601-20691
4	78		97947	751-40441

CROSS-REFERENCE INDEXES

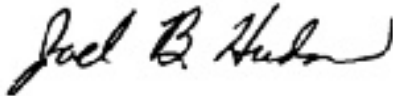
FIG.	ITEM	FIGURE AND ITEM NUMBER INDEX STOCK NUMBER	CAGEC	PART NUMBER
4	79		29516	9305-307
4	80		09527	GP0634
4	81		97947	751-40111
4	82		19008	M8-4014X60-CL8.8
4	83		D8286	M8-125A-Z
4	84		97947	751-40280
4	85		97947	751-40981
4	86		97947	751-41201
4	87		97947	751-11722
4	88		97947	751-11460
4	89		97947	750-11330-1
4	90		97947	750-11330-2
4	91		97947	750-11330-3
4	92		29516	9305-216
4	93		97947	000-07115
4	94		97947	754-17680
4	95		97947	757-16370
4	96		97947	785352
4	98		97947	027-01986
4	98		97947	272-00660
4	99		97947	751-17670
4	100		97947	757-18240
4	101		97947	272-00679
4	102		97947	272-00693
4	103		97947	751-15200
4	104		97947	272-00690
4	105		97947	785351
4	106		97947	757-16410
4	107		97947	272-00688
4	108		97947	757-18510
4	109		97947	751-15880
4	110		97947	751-12530
4	111		97947	751-10580
4	112		97947	201-45070
4	-113		97947	751-12710
4	114	5330-01-087-7373	97947	201-81200
4	115		97947	000-05809
4	116		D8286	M8-912X100-CL8.8
4	117		19008	M8-4032-CL8-Z
4	118		D8286	M8-127A-Z
4	119		D8286	M8-125A-Z
4	120		97947	000-05440
4	121		19008	M8-4017X20-CL8.8
4	122		D8286	M8-127A-Z
4	123		D8286	M8-125A-Z
4	124		97947	000-05441
4	125		97947	750-13290
4	126		97947	751-16260
4	127		19008	M12-4017X50-CL8.
4	128		D8286	M12-125A-Z
4	129		19008	M8-4032-CL8-Z

CROSS-REFERENCE INDEXES

FIG.	ITEM	FIGURE AND ITEM NUMBER INDEX STOCK NUMBER	CAGEC	PART NUMBER
4	130		D8286	M8-127A-Z
4	131		29516	9305-306
4	132		29516	9305-303
4	133		96906	MS52131-1
4	134		96906	MS35207-263
4	135		96906	MS35650-302
4	136	5310-00-045-3296	96906	MS35338-43
4	137	5306-00-226-4822	80204	B1821BH031C050N
4	138	5310-00-407-9566	96906	MS35338-45
4	139		29516	9305-302
4	140		19008	M10-4017X20-CL8.
4	141		D8286	M10-127A-Z
4	142		29516	9305-304
4	143		29516	9305-305
4	144		97947	364830
4	145		97947	751-12800
4	146		97947	751-10390
4	147		29516	9305-110
4	148		19008	M10-4014X160-CL8
4	149		D8286	M10-127A-Z
4	150		19008	M8-4017X10-CL8.8
4	151		D8286	M8-127A-Z
4	152		29516	9305-110-4
4	153		09527	SD0006
4	154		13445	8647
4	155		93061	1/8MMO-B
4	156		93061	125PN-2
4	157		97947	757-17650
4	158		97947	757-13204
4	159		97947	752674
4	160		97947	785613
4	161		29516	750-14160
4	162		97947	750-11330
5	1		29516	9305-801
5	2		29516	9305-802
5	3		29516	9305-803
5	4		29516	9305-804

By Order of the Secretary of the Army:

Official:



JOEL B. HUDSON
*Administrative Assistant to the
Secretary of the Army*
02340

DENNIS J. REIMER
*General, United States Army
Chief of Staff*

DISTRIBUTION:

To be distributed in accordance with DA Form 12-25-E, block no. 6270, requirements for TM 5-1730-245-24P.

These are the instructions for sending an electronic 2028

The following format must be used if submitting an electronic 2028. The subject line must be exactly the same and all fields must be included; however only the following fields are mandatory: 1, 3, 4, 5, 6, 7, 8, 9, 10, 13, 15, 16, 17, and 27.


From: "Whomever" <whomever@avma27.army.mil>
To: mpmt%avma28@st-louis-emh7.army.mil

Subject: DA Form 2028

1. **From:** Joe Smith
2. **Unit:** home
3. **Address:** 4300 Park
4. **City:** Hometown
5. **St.:** MO
6. **Zip:** 77777
7. **Date Sent:** 19-OCT-93
8. **Pub no:** 55-2840-229-23
9. **Pub Title:** TM
10. **Publication Date:** 04-JUL-85
11. **Change Number:** 7
12. **Submitter Rank:** MSG
13. **Submitter FName:** Joe
14. **Submitter MName:** T
15. **Submitter LName:** Smith
16. **Submitter Phone:** 123-123-1234
17. **Problem:** 1
18. **Page:** 2
19. **Paragraph:** 3
20. **Line:** 4
21. **NSN:** 5
22. **Reference:** 6
23. **Figure:** 7
24. **Table:** 8
25. **Item:** 9
26. **Total:** 123
27. **Text:**

This is the text for the problem below line 27.

RECOMMENDED CHANGES TO EQUIPMENT TECHNICAL PUBLICATIONS

 <p style="margin: 0;"><i>THEN...JOT DOWN THE DOPE ABOUT IT ON THIS FORM. CAREFULLY TEAR IT OUT, FOLD IT AND DROP IT IN THE MAIL.</i></p>				SOMETHING WRONG WITH PUBLICATION					
				FROM: (PRINT YOUR UNIT'S COMPLETE ADDRESS)					
PUBLICATION NUMBER		PUBLICATION DATE		DATE SENT					
PUBLICATION TITLE		<p style="text-align: center; font-weight: bold;">IN THIS SPACE, TELL WHAT IS WRONG AND WHAT SHOULD BE DONE ABOUT IT.</p>							
<p style="font-weight: bold; font-size: 0.8em;">BE EXACT PIN-POINT WHERE IT IS</p> <table border="1" style="width: 100%; border-collapse: collapse;"> <thead> <tr> <th style="width: 15%; padding: 5px;">PAGE NO.</th> <th style="width: 15%; padding: 5px;">PARA-GRAPH</th> <th style="width: 15%; padding: 5px;">FIGURE NO.</th> <th style="width: 15%; padding: 5px;">TABLE NO.</th> </tr> </thead> <tbody> <tr> <td style="height: 500px;"> </td> <td> </td> <td> </td> <td> </td> </tr> </tbody> </table>						PAGE NO.	PARA-GRAPH	FIGURE NO.	TABLE NO.
PAGE NO.	PARA-GRAPH	FIGURE NO.	TABLE NO.						
PRINTED NAME, GRADE OR TITLE AND TELEPHONE NUMBER				SIGN HERE					

The Metric System and Equivalents

Linear Measure

1 centimeter = 10 millimeters = .39 inch
 1 decimeter = 10 centimeters = 3.94 inches
 1 meter = 10 decimeters = 39.37 inches
 1 dekameter = 10 meters = 32.8 feet
 1 hectometer = 10 dekameters = 328.08 feet
 1 kilometer = 10 hectometers = 3,280.8 feet

Weights

1 centigram = 10 milligrams = .15 grain
 1 decigram = 10 centigrams = 1.54 grains
 1 gram = 10 decigrams = .035 ounce
 1 decagram = 10 grams = .35 ounce
 1 hectogram = 10 decagrams = 3.52 ounces
 1 kilogram = 10 hectograms = 2.2 pounds
 1 quintal = 100 kilograms = 220.46 pounds
 1 metric ton = 10 quintals = 1.1 short tons

Liquid Measure

1 centiliter = 10 milliliters = .34 fl. ounce
 1 deciliter = 10 centiliters = 3.38 fl. ounces
 1 liter = 10 deciliters = 33.81 fl. ounces
 1 dekaliter = 10 liters = 2.64 gallons
 1 hectoliter = 10 dekaliters = 26.42 gallons
 1 kiloliter = 10 hectoliters = 264.18 gallons

Square Measure

1 sq. centimeter = 100 sq. millimeters = .155 sq. inch
 1 sq. decimeter = 100 sq. centimeters = 15.5 sq. inches
 1 sq. meter (centare) = 100 sq. decimeters = 10.76 sq. feet
 1 sq. dekameter (are) = 100 sq. meters = 1,076.4 sq. feet
 1 sq. hectometer (hectare) = 100 sq. dekameters = 2.47 acres
 1 sq. kilometer = 100 sq. hectometers = .386 sq. mile

Cubic Measure

1 cu. centimeter = 1000 cu. millimeters = .06 cu. inch
 1 cu. decimeter = 1000 cu. centimeters = 61.02 cu. inches
 1 cu. meter = 1000 cu. decimeters = 35.31 cu. feet

Approximate Conversion Factors

To change	To	Multiply by	To change	To	Multiply by
inches	centimeters	2.540	ounce-inches	Newton-meters	.007062
feet	meters	.305	centimeters	inches	.394
yards	meters	.914	meters	feet	3.280
miles	kilometers	1.609	meters	yards	1.094
square inches	square centimeters	6.451	kilometers	miles	.621
square feet	square meters	.093	square centimeters	square inches	.155
square yards	square meters	.836	square meters	square feet	10.764
square miles	square kilometers	2.590	square meters	square yards	1.196
acres	square hectometers	.405	square kilometers	square miles	.386
cubic feet	cubic meters	.028	square hectometers	acres	2.471
cubic yards	cubic meters	.765	cubic meters	cubic feet	35.315
fluid ounces	milliliters	29.573	cubic meters	cubic yards	1.308
pints	liters	.473	milliliters	fluid ounces	.034
quarts	liters	.946	liters	pints	2.113
gallons	liters	3.785	liters	quarts	1.057
ounces	grams	28.349	liters	gallons	.264
pounds	kilograms	.454	grams	ounces	.035
short tons	metric tons	.907	kilograms	pounds	2.205
pound-feet	Newton-meters	1.356	metric tons	short tons	1.102
pound-inches	Newton-meters	.11296			

Temperature (Exact)

°F	Fahrenheit temperature	5/9 (after subtracting 32)	Celsius temperature	°C
----	------------------------	----------------------------	---------------------	----

PIN: 074870-000